

This drawing may contain: Ordnance Survey material by permission of Ordnance Survey on behalf of the Controller of Her Majesty's Stationery Office © Crown Copyright 2018. All rights reserved. Reference number 0100031673

PROJECT TITLE
NORTH ELY

OS Open data / © Natural England / © DEFRA / © DECC / © English Heritage.
Contains Ordnance Survey data © Crown copyright and database right 2018
| Aerial Photography - World Imagery: Source: Esri, DigitalGlobe, GeoEye,
Earthstar Geographics, CNES/Airbus DS, USDA, USGS, AeroGRID, IGN, and the
GIS User Community

No dimensions are to be scaled from this drawing.
All dimensions are to be checked on site.
Area measurements for indicative purposes only.

© LDA Design Consulting Ltd. Quality Assured to BS EN ISO 9001 : 2008

ISSUED BY Oxford
DATE Jun 2019
SCALE@A3 NTS
STATUS Draft

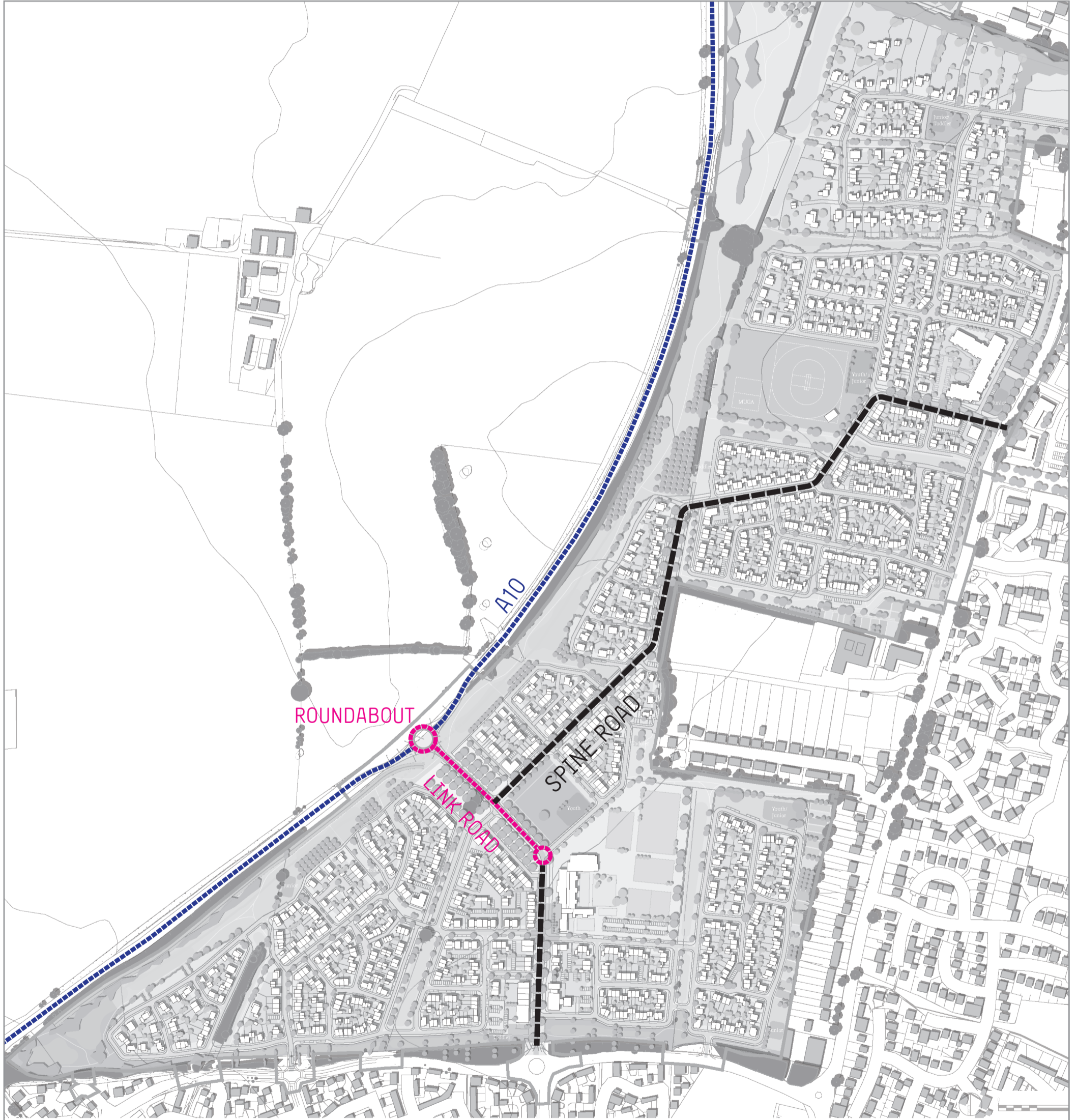
T: 01865 887050
DRAWN KW
CHECKED PL
APPROVED PL

DRAWING TITLE
Section 106 Deed of Variation
Viability Review

Sources: Ordnance Survey

DWG. NO. 5321_Deed of Variation

X:\JOBS\5321_Ely Condition Discharge\Graphics\Plans_Images\Spine Road\Deed of Variation.indd



LEGEND

- A10
- Spine Road
- Link Road
- Roundabout