
TITLE: PSPO ELY (DESIGNATED AREAS)

Committee: Community Services Committee

Date: 13 September 2017

Author: Neighbourhood Support Officer

[S94]

1.0 ISSUE

- 1.1 To consider a Public Spaces Protection Order for land designated at Angel Drove Car Park, the Dock Car Park and Cambridgeshire Business Park parking area in Ely.

2.0 RECOMMENDATION(S)

- 2.1 Members are requested to adopt the 'East Cambridgeshire District Council Crime and Policing Act 2014, Public Spaces Protection Order 2017 (Angel Drove Car Park, The Dock Car Park and Cambridgeshire Business Park parking area in Ely) as set out in Appendix E, to come in to force from an exact date to be confirmed;
- 2.2 Members are requested to consider receiving proposals for future variations to the proposed Order based on a monitoring period and public consultation feedback.

3.0 BACKGROUND/OPTIONS

- 3.1 The Anti Social Behaviour Crime and Policing Act 2014 gives local authorities the power to designate public areas through the introduction of Public Spaces Protection Orders (PSPOs).
- 3.2 PSPOs are intended to deal with a particular nuisance or problem in a particular area that is detrimental to the local community's quality of life, by imposing conditions on the use of that area which apply to everyone. They are designed to ensure the law-abiding majority can use and enjoy public spaces, safe from anti-social behaviour.
- 3.3 Robust evidence must be forthcoming before a PSPO can be considered as an intervention. A PSPO can be made by the Council if they are satisfied on reasonable grounds that the activities carried out or likely to be carried out, in a public space:
- have had, or are likely to have, a detrimental effect on the quality of life of those in the locality;
 - is, or is likely to be, persistent or continuing in nature;
 - is, or is likely to be, unreasonable; and

- Justifies the restrictions imposed.

3.4 The vicinity of Angel Drove Car Park, The Dock Car Park and Cambridgeshire Business Park parking area in Ely has been identified as an area suitable for a PSPO.

The Community Safety Partnership commissioned the County Council Research Group to produce a research report on the range and scale of anti social driving at specified locations throughout East Cambridgeshire.

“Angel Drove car park in Ely has been highlighted as a key hotspot of vehicle related anti-social behaviour by local residents and the district council. This car park is owned and maintained by the district council and therefore gives the council and local agencies more freedom over possible solutions. One of the key issues raised by the constabulary surrounding this site is that the number of incidents that is reported to them is relatively low and in order for them to put appropriate activity in place to intervene, there needs to be an increased level of reporting.

Local members and district council officers have received high volumes of complaints about anti-social issues on this site but this is not replicated in police data. Between January 2015 and December 2016, police recorded Anti-Social Behaviour incidents data only showed between 10 and 15 vehicle or noise related ASB incidents on this site. The lack of incidents recorded by the police differs significant from the intelligence and reports to the district council.”

(Community Safety Partnership – Cambridgeshire County Council Research Group 2017/18 BRIEFING ONE ANTI-SOCIAL DRIVING)

3.5 East Cambridgeshire District Council has recorded key incidents / complaints regarding Angel Drove car park in Ely. This is provided at Appendix A. Photographic evidence of littering and dumping is also provided at Appendix A.

3.6 The proposed Order will include the following provisions at Angel Drove Car Park, Cambridgeshire Business Park Car Park, & The Dock Car Park;

Any person is prohibited from personally carrying out or assisting or encouraging any other person to carry out any of the behaviours specified in (a) to (i) below at any time in the restricted area;

- (a) Driving a motor vehicle at excessive speed causing or being likely to cause a nuisance to persons in the locality of the restricted area.
- (b) When driving a motor vehicle causing repeated sudden and rapid acceleration of the motor vehicle causing or being likely to cause a nuisance to persons in the locality of the restricted area.
- (c) Racing other motor vehicles causing or being likely to cause a nuisance to persons in the locality of the restricted area.

- (d) Performing stunts using a motor vehicle causing or being likely to cause a nuisance and/or danger to persons in the locality of the restricted area. Performing stunts includes but is not limited to doughnutting, drifting, handbrake turns, wheel spins or any other motor vehicle related activities which cause or are likely to cause a nuisance and/or danger to persons in the locality of the restricted area. Descriptions of the activities of doughnutting, hand brake turns, drifting and wheel spins are set out in the schedule.
- (e) Sounding motor vehicle horns other than in accordance with the Highway Code in a manner causing or being likely to cause a nuisance to persons in the locality of the restricted area.
- (f) Playing amplified music in a motor vehicle causing or being likely to cause a nuisance to persons in the locality of the restricted area.
- (g) Using loud and/or threatening and/or abusive language or otherwise intimidating another person in the locality of the restricted area.
- (h) Dropping litter from a motor vehicle or just otherwise dropping litter
- (i) Gathering in groups in motor vehicles for purposes other than simply parking and causing or likely to cause nuisance, alarm and distress to other users.

Description of prohibited activities at (d):

- *Doughnutting - driving around in a repetitive manner, for example in a figure of eight.*
- *Hand brake turns - using the handbrake to turn the vehicle.*
- *Drifting - use of the accelerator when going into a bend causing the tail end of the vehicle to slide.*
- *Wheel spins - use of the accelerator when the vehicle is stationary and before releasing the handbrake causing the wheels of the car to spin and noise and/or smoke to be produced.*

A person guilty of an offence under conditions (a) to (i) above, under section 67 of the Act is liable on summary conviction to a fine not exceeding level 3 on the standard scale or fixed penalty notice of a maximum £100.

A separate paper containing an enforcement protocol is being presented to this Community Services Committee meeting.

3.7 Public consultation is a requirement under Section 59 Anti-Social Behaviour, Crime and Policing Act 2014.

Informal consultation and engagement with appropriate local interest groups has taken place during spring and early summer of 2017, to determine support or otherwise for the Order.

Prior to any formal process being considered the issues were discussed at various Community Safety Partnership and Parish level meetings. This information is provided at Appendix B.

Formal consultation process

The formal consultation was carried out between 10 July 2017 and 21 August 2017 has concluded;

- ❑ 28 replies affirming support for the PSPO
- ❑ 0 replies in opposition to the PSPO.
- ❑ 1 reply from Cambridgeshire County Council affirming support
- ❑ 6 replies out of the 28 positive responses from businesses.
- ❑ 1 reply in support from the Cambridgeshire Office of the Police and Crime Commissioner.

The consultation exercise resulted in 19 e-mailed responses from local residents.

No overtly adverse comments were received regarding the implementation of the proposed PSPO during the consultation exercise.

A summary of the comments received, is included at Appendix C to this report.

Attached at Appendix D is a map and description of the area to be designated. A large-scale version of the plan of the areas will be displayed at the meeting. Appendix E provides a draft version of the order to be approved by Members.

4.0 ARGUMENTS/CONCLUSIONS

- 4.1 The result of the consultation exercise demonstrates that the public generally support the designation area now proposed. It is considered that designation of the proposed area covering for land designated at Angel Drove Car Park, The Dock Car Park and Cambridgeshire Business Park parking area in Ely for additional restrictions on anti social behaviour will assist the Police in addressing crime and disorder issues that arise from misuse of these areas.
- 4.2 Ongoing monitoring of the effectiveness of the Order will take place over the first six months initially and thereafter at further six month periods.

5.0 FINANCIAL IMPLICATIONS/EQUALITY IMPACT ASSESSMENT

- 5.1 There are no financial implications associated with making the order.

- 5.2 Equality Impact Assessment (INRA) not required.

6.0 APPENDICES

- Appendix A –** East Cambridgeshire District Council key incidents / complaints regarding Angel Drove car park in Ely.
- Appendix B -** Summary of pre formal consultation process
- Appendix C-** Summary of comments received via public consultation
- Appendix D-** Map and description of the areas to be designated.
- Appendix E –** Draft order

Background Documents

Anti-social Behaviour,
Crime and Policing
Act 2014
CHAPTER 12

Location

Room FF115
(The Grange,
Ely)

Contact Officer

Nick Ball
(Neighbourhood Support Officer
(01353) 616455
E-mail:
nick.ball@eastcambs.gov.uk

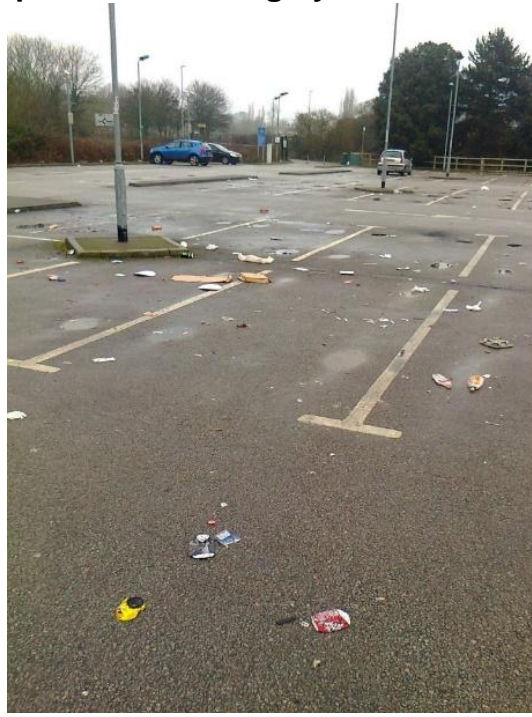
Appendix A – East Cambridgeshire District Council key incidents / complaints regarding Angel Drove car park in Ely.

Incident report	Reported by/to	Date
<p>As a commuter to and from London, I use the Angel Drove parking facility daily. I arrive at 7.30am to a mess of rubbish, broken glass and black skid marks on the tarmac. In the evening most days at 7pm there is a gathering of motoring enthusiasts wandering the parking facilities, sharing engine noises and from the remains on the tarmac, also driving recklessly in the area.</p> <p>My objection is that I pay to use the facility and I do expect a Duty of Care to be performed at the facility by the council. I frequently do overnight trips and the last place I will leave my car is the Angel Drove parking place. If something happened to my car the council will be quick to point out the 'Parking at your own risk' signage and gloss over the fact the spot has become a meeting place for people in heavily modified cars to go 1 to 1 with each other.</p> <p>What is currently on the plan to remedy this?</p>	Member of public to town centres	08 September 2016
<p>The car park on Angel Drove is absolutely disgusting. Every evening I'm intimidated by young lads who hang around there in their cars racing round the car park. Why won't the police move them on? It's dangerous. They also leave their litter which makes the car park unpleasant. The litter around the car park is building up and it looks awful. The council knows this goes on as I know a number of people who have complained but why won't you do anything?</p> <p>What action would you like us to take?</p> <p>Prevent the young lads from being in the car park and clear up the litter!</p>	Member of Public to Town Centres	2016-03-13
<p>I noticed on the "Spotted in Ely" facebook group late last night that several residents were complaining about the noise, litter and potential danger of people crashing in the car park. This is obviously a continuing problem and we are concerned that preventative measures are not being put into place to protect us from more damage. If you could come back to me that would be great as it seems that the problem is escalating rather than improving at the moment.</p>	Myriad Public Relations Ltd To Town Centres team	23 August 2016
<p><i>"Hi – anyway you can put a message up about the dangerous driving/driftng taking place in the business park just past Tesco's? Someone almost crashed tonight apparently and constant tyre screeching for hours. Wondering if you can highlight it to the Police through your channels and on the SIE message board as nothing appears to being done, despite being reported."</i></p> <p><i>"I've never been around when the cars are there but I have used the car park the morning after and the amount of beer tins (!), pizza boxes and other litter is repulsive".</i></p> <p><i>"I hear it all the time and I live near the college. It's pathetic, I hear them racing down bypass. Some of us have children that are sleeping. They should ban it completely; no youth of today have respect for anyone".</i></p> <p><i>"I reported it to the police once- and they sent a patrol car down. It helps if you can get car description and reg no if you witness it. The cars had bread crates under their rear tyres, skating around - during daylight hours!"</i></p> <p><i>"They use Sutton business Park too as I can hear the racing quite often."</i></p> <p><i>"It's been a few nights where it's after 11.30pm. I can hear it and past Sainsbury's way. I had no idea where it was coming from!"</i></p>	General facebook comments	Nov 16
<p>I just wanted to report the state of the car park this morning as it was quite shocking. It's covered in litter (it very often is) and there were two car seats (as if a car had been destroyed and taken to pieces) strewn in the car park, taking up bays. I watched one lady having to get out of her car to move one of them out of</p>	Member of the public to Town Centres team	05 September 2016

<p>the way before she could park.</p> <p>I brought the state of the car park to your attention 2 years ago and you were going to investigate. I can't really see that there has been a great deal of improvement in the state of the car park and it is always covered in litter. I was just ignoring it, but this morning was particularly bad. For a paying car park, it does seem a shame that it always seems to be in such a poor condition. I just wanted to bring this to your attention as I noticed other motorists looking equally as shocked as I was.</p>		
<p>I just thought I would inform you of an incident that was reported to us today by a neighbouring business. This morning they saw a pink cover, covering the ANPR camera in Angel Drove. A few hours later it would appear that the wind had blew it off.</p> <p>Now of course this could be nothing and maybe the cover blew there in the first place? If the cover had been deliberately placed to prevent a vehicle registration number being recorded (and how anyone climbed up there to do this is a mystery in itself) I wondered if there was any planned activity for the car park tonight.</p> <p>We will check our CCTV to see if we can see anyone putting it up and report back any relevant findings but in the meanwhile, I just thought I ought to let you know and if you do have any spare people to do a patrol this evening I would be grateful.</p>	Town centres to Police inspector	24 April 2017
<p>I have tried to ring you (left voicemail message), I need to make you aware of two recent incidents at Angel Drove which may be an escalation of the anti-social behaviour by some late evening/night users of Angel Drove car park.</p> <p>The first incident occurred the end of last week when one of the pay & display machine was damaged. Someone placed some sort of object in to the coin receiving mechanism with sufficient force to bend the internal metal plates, thereby rendering the machine inoperable.</p> <p>The second incident and perhaps more concerning, occurred 1st — 2nd June 2015 when someone took pot shots with an air weapon, again, at one of the pay & display machines. An air pellet was recovered from the door- jam of the machine and there are two indentations on the front of the machine where it has been struck by further pellets.</p> <p>We continue to experience people using the car park during the evenings and weekends as a place gather and use the car park as a skid-pan and leave fast food, drink cans and other litter strewn across the car park. We appreciate that such anti-social activity is not a priority for the Police but any patrols and associated intelligence would be greatly appreciated.</p>	Town centres team to Constabulary	05 June 2015
<p>I have a yearly season pass for Angel Drove car park in Ely. I have held this pass since August last year and I have noticed on a regular basis first thing in the mornings when arriving at 7.15am rubbish thrown on the floor of the car-park. The location of the rubbish always appears to be in the same place and always as if it has been thrown out a car window. Can anything be done? It's not just the odd plastic bottle, but all kinds of food package waste. I imagine the people responsibly are the same each time. There are plenty of bins in the car park so this is down to complete laziness on their part. Can anything be done via looking at the CCTV?</p>	Member of public to town centres team	15 May 2015
<p>I was given your contact details by reception at ECDC as the person responsible for the City Centre car parks in Ely.</p> <p>We are a public relations agency and our office building backs onto the Angel Drove car park along with our neighbouring company Kore. I am not sure if you are aware</p>	Public relations Company at Angel Drove to	03 June 2016

but in the late hours of Saturday 21 May we had a BMW drive into the side of our office building from the car park causing considerable damage to our property. Both Kore and ourselves would be keen to meet with you as we would like to discuss any measures which could be taken to prevent this from happening in the future.	Town Centres team	
<p>I'm not sure if this is the correct place to put this, but was unsure where to do so. I would just like to make a comment about Angel Drove car park. On several occasions when I have travelled on a later train and walked back to the car park, there have been several people ("boy racers") driving and hanging around as if they have been using the car park as a 'playground'.</p> <p>This is an intimidating situation to be confronted with especially as a lone person walking to their car in the dark. I have never been confronted by them but it makes me feel uncomfortable, and it is not the correct place to hang out.</p> <p>There is also the issue of the litter which they leave. On occasion there are tyre marks which prove activity beyond normal driving has taken place.</p>	Member of public to Town centres team	07/03/2016

Appendix A cont. - Photographic evidence log by Town Centres ECDC



Severe littering and detritus after 'car cruising' reports.
Photographed by Town Centres Parking Team



Appendix B – <u>Pre formal project development and consultation</u>	
Meeting	Date
CSP road safety meeting focussing on E lean business park. Discussion <i>moved</i> on to Angel Drove.	Wednesday 14th December 2016
Community safety partnership – Task Group Officers from County Council, ECDC, Police, Fire and Rescue, Sanctuary housing discussed shaping a research report from CCC Research Group on 'Anti Social driving at selected locations in East Cambridgeshire'.	Tue 18/04/2017
CSP Officer task group follow up meeting To shape further the specification for the CCC research report.	Thu 27/04/2017
Commercial Services Committee Chairman's Brief Informal first consideration of PSPO for Angel Drove and surrounding areas.	Wed 17/05/2017
City of Ely Council informal briefing by the Mayor of Ely about outline proposals for a PSPO. The support obtained was to go out for a formal consultation process and COEC members were clear that this was a Draft presentation of an outline order. MINUTES OF A MEETING OF THE CITY OF ELY COUNCIL HELD IN THE VERNON CROSS ROOM, ELY MUSEUM, MARKET STREET, ELY AT 7.00 PM ON MONDAY, 5TH JUNE 2017 PRESENT: The Mayor, Cllr R Hobbs Cllr M Rouse Cllr D Warman Cllr S Friend-Smith Cllr J Pearson Cllr P Moakes Cllr A Whelan Cllr C Whelan Cllr I Lindsay Cllr C Phillips Cllr E Every <i>2 parishioners</i> 15. EAST CAMBRIDGESHIRE DISTRICT COUNCIL'S (OFF STREET PARKING PLACES) ORDER 2017 Members discussed this consultation and unanimously supported the proposals with this. In conjunction with this the Mayor had tabled a Section 59 Anti-Social Behaviour, Crime and Policing Act 2014: Certificate of consultation for the making of a Public Space Protection Order with regards to the Angel Drove car park. Members also agreed to fully support this Order.	5 th June at 7.00pm
Community Safety Partnership Task Group Quarterly meeting The meeting received the report from the County Council Research Group and heard a presentation on the topic of dangerous and anti social driving from Jamie Leeman of the Research Group. The meeting agreed to adopt the report and look to implement its recommendations. The meeting agreed that the research report could be used as a robust evidence base for progressing interventions to solve the problems across the district.	Wed 05/07/2017

Appendix C – Summary of comments received via public consultation


Number	Date received	Comments received	Received from
001	19 July 2017	<p>I am writing to you about the letter received about the anti social behaviour concerning Angel Drove, Angel Drove Car Park, Cambs business car park, The Dock.</p> <p>This has been going on for over two years and is totally unacceptable. The noise from the car exhausts, the racing cars, horns and wheel spinning in a built up area is upsetting, worrying and causing so many sleepless and disturbed nights.</p> <p>Our Christmas was awful as they were doing it every night and reduced me to tears and upset all my family.</p> <p>We were calling the police over the whole of the holiday.</p> <p>They still persist, with the cars going so fast, way above any speed limit. I'm surprised that the police can't do anything to stop this. Angel Drove being 30mph all the way. It sounds like they are on a race track, and the noise of modified engines and exhausts, I wonder how they can possibly get car insurance.</p> <p>We are worried about further car parks as it's going to attract more cars. This weekend they were using Tesco's car park to spin and I wonder how long it will be before someone is seriously injured.</p> <p>It won't be them but some innocent person.</p> <p>We have been asked by the police if we can get number plates but this isn't our job.</p> <p>We need police to be vigilant to this massive problem.</p> <p>Hopefully this problem can be resolved as soon as possible.</p>	Member of the public
002	2017-07-14	<p>In ref to the noise at Angel Drove. Very much approves of the proposed action and very happy it's been seen to.</p> <p>No need to call back</p>	Anonymous
002	2017-07-13	<p>Very much approves of the proposal, he said that there was a nuisance even last night. He wanted to add though that he wasn't sure if some of this nuisance is coming from Tesco car park, not just Angel Drove.</p>	Voluntary sector representative to the Community Safety Partnership and local resident
003	Tue 11/07/2017	<p>Thank you for your letter dated July 2017 that arrived this morning with the details of the proposed section 59 Anti-Social order.</p> <p>Whilst I appreciate why this has come to light, my only concern is that if this order comes into force, the offenders will seek adjacent areas in which to participate in these activities namely shared private car parking areas such as the one we share with the other businesses in our part of the site, which I see from your map is not included. I take it the reason for this is that's its privately owned and not a public highway or council property.</p> <p>This is just for comment, but I will be sending your correspondence to our Landlord as they may also wish to pass comment.</p> <p>Kind regards</p>	<p>Senior Agent</p> <p>NFU Mutual, Unit 5 Prospect Place, Cambridge Business Park, Ely, CB7 4EX</p>
004	Wed 12/07/2017	<p>The sooner this PSPO is done the better. We noticed that even with the new concrete blocks put in the car park the "boy racers" are now weaving</p>	Kore Technology Ltd.

		<p>around these. Apart from the rubbish left someone, either a boy racer or a commuter returning to the car park is going to get killed or severely injured unless this activity is stopped.</p> <p>Best Regards</p>	<p>Cambridgeshire Business Park, Ely, Cambs. CB7 4EA UK</p>
005	Wed 12/07/2017	<p>Your letter July 2017.</p> <p>I fully support your proposed action which sadly is needed and needs action asap.</p>	<p>Local elected member</p>
006	Thu 13/07/2017	<p>Thank you for your recent letter regarding a Public Spaces Protection Order formal consultation.</p> <p>As a business based on the Angel Drove Business Park, we have witnessed the anti-social and dangerous driving referred to and attach a video taken at one of these occasions.</p> <p>We have also noticed a high amount of litter in our car park and surrounding area following one of these meetings and would welcome any enforcement to prohibit these activities in the future.</p>	<p>Whiting and Partners UK Ltd</p>
007	Thu 13/07/2017	<p>I am sending this on behalf of myself and my colleague in Highway Asset Information as a reply to your consultation.</p> <p>From a Public Right of Way perspective we have not comments to make as no PRoW will be affected by the order.</p> <p>From a Highways Asset perspective we would also have no comment as although there are Public Highways affected by the order, namely Sir James Black Rd, Bartholemew's Walk and Sir Thomas' Place, the order if made would not prevent normal public use of the highways in question.</p> <p>Kind Regards</p>	<p>Cambridgeshire County Council Highways Asset Information Definitive Maps</p>
008	Thu 13/07/2017	<p>You wrote seeking my response to the above proposal at Angel Drove My response is that I am very much in favour of your proposal (councillor)</p>	<p>City of Ely Council elected member</p>
009	Thu 13/07/2017	<p>I would welcome the introduction of the proposed order in relation to the above.</p> <p>The problem is more noticeable during the warmer months when windows are open or one is sitting in the garden. Even during the winter months the screeching noises are audible.</p> <p>Public safety issues may also be a consideration if members of the public were in the defined areas for legitimate reasons. Behaviour, as described in your consultation document, would be most intimidating.</p> <p>I would appreciate notification of the final decision in relation to the proposed order.</p>	<p>Member of the public</p>
10	Fri 14/07/2017	<p>Have just received the document re Public Space Protection Order and would like to comment. Your document does not mention the parking space at Tesco's nearby. It is not a public space. I live in Station Road and have LONG wanted something done about the antisocial revving of engines and driving in an antisocial manner during weekend nights in the</p>	<p>Member of the public</p>

		car park which is disturbing for residents nearby. Along with the resultant litter left behind. I would value your reply to these comments.	
11	Fri 14/07/2017	I have scrutinised the proposals concerning the Angel Drove car park et al in Ely. I am in full support of those proposals.	Principal Kings School Ely
12	Fri 14/07/2017	While I do hear the noise from the Angel Drove area at night it doesn't keep me awake. My big concern is that if you stop them "performing" at Angel Drove they will go back to doing it up and down Fore hill and Back hill and hurtling around the corner from Broad St into Victoria Street at a ridiculous speed across the pavement and travelling down Victoria Street at dangerous speeds. The idea situation would be to give them a place out of town to "perform " in but I guess that is more expense.	Member of the public
13	Sun 16/07/2017	As a resident of Potters Lane, it is a relief to receive the information on this subject. I wholeheartedly support the proposal. The distress caused by racing in the nearby car parks is longstanding and ,indeed, debilitating to local residents. Our complaints are well documented. We can only hope it comes into effect as soon as possible.	Member of the public
14	Sun 16/07/2017	Regarding the proposed Public Spaces Protection Order, we have great concern that establishing the PSPO for the out of town spaces around Angel Drove and the Dock Car Park, does nothing to address the similar problem with Fore Hill Car park and Broad Street, and may even exacerbate the problem here by driving the individuals to Fore Hill, if stopped elsewhere. Even now, loud exhaust cars meet at the car park and presumably race up and down Broad Street at night. Revving engines and screeching tyres are common. Fridays and Saturdays being a favourite time. Can the council please ensure that problem isn't just moved to a different area, and monitor Broad Street at night. Regards	Member of the public
15	Sun 16/07/2017	Dear Mr Ball, Thank you for including me in your consultation on the above matter.I have been aware of the anti-social behaviour in the area referred to on your detailed map over a period of many years,and it was one of the questions that I raised with the Police and Crime Commissioner at a Surgery that he held here in Ely on the 6th of April.You have my full support in making this area subject to a Public Place Protection Order. Kind regards	Member of the public
16	Mon 17/07/2017	Just to say that we are in support of the introduction of the PSPO. Over last few years the issue of 'boy-racers' has caused a real sense of annoyance and concern – for their safety, the noise nuisance to local residents and a flagrant abuse of public spaces and the law. We wish you and the enforcement officers well in introducing this order and in sustaining the efforts to combat anti-social behaviour. With all best wishes,	Member of the public

17	Mon 17/07/2017	I personally have no objections to the PSPO on Angel Drove / Cambs Business and the Dock car parks in Ely. I cannot speak for all City Councillors of the City of Ely Council a collective response would be needed from them as a Council. Regards	City of Ely Council elected member
18	Mon 24/07/2017 12:36	Further to your letter regarding the notice received about the consultation on a PSPO for Angel Drove car park/Cambs Business car park and the Dock car park in Ely. We welcome any action being taken to check and challenge the anti-social and dangerous driving at the above car parks. As a business we have personally suffered significant damage relating to this behaviour. I am not sure if you are aware but in May 2016 a car driven by one of the youths was driven into our office building and caused significant damage, business interruption and distress to our employees and business. It took nearly 6 months for us to have the building re-built and for us to return back to the same state as we were before the incident. We have also taken steps to protect our building as the rear of our building backs onto the car park and we have installed at our significant expense an Armco barrier. We do however remain concerned that another incident could result in damage again as since the event there has been significant skid marks in the car park, anti-social behaviour, groups of youths meeting up in the car park, littering and covering of the CCTV cameras currently in place. In essence we have a huge interest in this order being made and support any subsequent further action to eliminate this type of behaviour and wholeheartedly 100% support this. If any further information about our incident or if any further support is required then please do not hesitate to contact me. Kind regards.	Local Business Myriad Public Relations Ltd
19	Mon 24/07/2017 17:19	I am writing to confirm my strong support for the PSPO for Angel Drove car park. I am a daily user of that car park and have complained on numerous occasions at how disgusting it is, constantly littered with rubbish. In addition, as a young woman, I often feel initiated walking back to my car in the evenings due to the presence of young lads in their cars hanging around the car park. Something needs to be done so I am pleased the council is taking positive steps. Yours sincerely CB	Member of the public
20	Mon 24/07/2017 17:21	Dear Mr Ball I have just put out your consultation re: Cars Park in South Ely: https://www.facebook.com/SpottedInEly/posts/1595773680453409 Regards Spotted in Ely	Spotted in Ely
21	26 July	Reference: Public spaces protection order formal consultation	Richard B

	2017	<p>I refer to your recent letter concerning the proposed Public Spaces Protection Order (PSPO) for the Angel Drove car park/Cambs Business Park car park and the Dock car park in Ely.</p> <p>We share the concern of others as to the misuse of these areas and are fully supportive of the proposed Protection Order.</p> <p>Yours sincerely</p>	<p>Norden Cawdle Developments Ltd Unit 2 The Exchange Station Road Stansted</p>
22	27/07/2017 09:46	<p>Hello,</p> <p>Thank you for consulting for the proposed Angel Drove PSPO. I agree with the proposals, they should make our evenings much quieter and environment less littered. The noise from car gatherings at the site is surprisingly loud for us as local residents. My only query would be; how will other car parks, such as the brand new leisure park, be protected so the problem isn't simply shifted across town?</p> <p>Kind regards, AP</p>	Member of the public
23	01/08/17	<p>I am delighted that there is a proposed Public Spaces Protection Order close to where I live and I endorse it wholeheartedly.</p> <p>For months I have endured a lot of noise from vehicles revving up and generally racing until only knows what hours of the morning. Sometimes making it difficult to sleep.</p> <p>I have in the past complained about it but was told nothing could be done, so am very delighted this proposal is happening.</p> <p>Yours faithfully SS</p>	Member of the public
24	2nd August 2017	<p>Dear Nick</p> <p>I refer to your email of the 10th July 2017 regarding East Cambridgeshire District Council's (ECDC) proposal for a Public Space Protection Order (PSPO) for Angel Drove Car Park /Cambs Business Park car park/ The Dock car park in Ely.</p> <p>I both welcome and thank EDCC for undertaking the consultation to seek the views of the public and myself as Cambridgeshire Police and Crime Commissioner in response to problems that are occurring in Angel Drove Car Park /Cambs Business Park car park/ The Dock car park in Ely.</p> <p>This letter is my formal consultation response on behalf of the Commissioner.</p> <p>To inform my response I have considered the views of Cambridgeshire Constabulary's Local Policing Team for this area.</p> <p>I fully appreciate the effects that anti-social behaviour has on individuals, businesses and communities. Continuing to tackle anti-social behaviour (ASB), including responding to and preventing problems caused by performing stunts in motor vehicles which will likely cause a nuisance and or danger to persons in the locality, is a priority in my Police and Crime Plan, and as such is a priority for the Constabulary. Partnership working such as that between the Constabulary and ECDC is key to co-ordinating both an effective response to anti-social behaviour to protect individuals, communities and businesses from the harm caused and to ensure those responsible are effectively held to account.</p> <p>I understand from the Constabulary that the local police force have been working for some time with ECDC to address the issues of Vehicle ASB and that they support a joint approach to tackle this problem with a view to making the roads safer and providing reassurance to the public.</p> <p>In conclusion, I fully support ECDC's proposal for a PSPO as outlined in the consultation document for the purpose of prohibiting Vehicle anti-social behaviour in Angel Drove Car Park /Cambs Business Park car park/The Dock car park in Ely. However, with the ever increasing pressures and demands on limited Police resources I would like ECDC to</p>	Cambridgeshire Office of the Police and Crime Commissioner

		<p>assist with the enforcement of the PSPO as neighbouring local authorities do. Enforcement should not be the sole responsibility of police officers and PCSOs.</p> <p>I hope that the PSPO is effective in preventing the detrimental effect this disorder and nuisance is having on the residents, the community, and businesses in and around these locations.</p> <p>Yours sincerely, Jason Ablewhite</p>  <p>Cambridgeshire Police and Crime Commissioner</p>	
25	<p>Tue 15/08/201 7 09:57</p>	<p>Sir,</p> <p>I very much welcome and support the proposal to make a Public Space Protection Order in the Angel Drove, Cambs Business car park and Dock car park area.</p> <p>As a nearby resident I can say that, over recent years , the antics of the 'boy racer' element which congregates in the area have caused a not inconsiderable and increasing noise nuisance, continuing into the late evening (at times this has been every evening for several days in a row) and I am aware that this has caused distress to older neighbours and those in poor health.</p> <p>Initially, small groups of young car enthusiasts used to meet up in the Angel Drove car park to compare their cars' specifications (and sound systems) but generally they were quite respectful of other (paying) car park users and didn't appear to cause too much of a problem. Unfortunately, this changed and the area now hosts a new crowd of young drivers who seem to take over the greater area of the car park in/from which to launch their displays of aggressive, speed driving - witness the skid marks on the road surfaces. This has seen, quite understandably, commuters reluctant to leave their vehicles in the car park and opting to leave them in neighbouring side streets - rather than run the risk of damage to their cars and avoiding the quite intimidating attitude of the stunt drivers.</p> <p>As I have been aware of how the behaviour in the Angel Drove has caused people concern I have raised the issue at local community meetings (most recently with a police representative at the Mayor's Forum) but it seemed that, although there was an 'awareness' of what was going on, there was no commitment to sorting the problem out so I am so pleased that at last positive action might be taken.</p> <p>GD</p>	Member of the public
26	<p>Thu 17/08/201 7 11:40</p>	<p>In response to your formal consultation document with regard to a PSPO for Angel Drove/Cambridge Business Park/The Dock car parks:</p> <p>The noise that ensues from the periodic activities of vehicles in these areas is quite extraordinary. Even with our (double-glazed) windows firmly closed, the noise still out-does that from the tv, so we have to resort to putting the subtitles on. We are not even on the Angel Drove side of Potters Lane, but some distance away on the north-western side. Neighbours who live on the closer south-eastern side describe the noise as 'intolerable'. This is most certainly 'a nuisance <i>and</i> annoyance to (us) members of the public.</p> <p>We have occasionally discussed going down to the car-parks to see for ourselves exactly what is happening, and to take photos for evidence.</p>	Member of the public

		<p>However we feel there is significant 'disorder in the area under discussion' which may well be associated with those perpetrating it having scant regard for the law, thereby potentially posing a risk to our safety.</p> <p>Ringling the police has been discussed but not acted upon, due to lack of faith that much or any action would be taken by them. Therefore we welcome this attempt by ECDC to resolve this problem.</p> <p>Yours sincerely</p> <p>LJ</p>	
27	Sun 20/08/2017 15:29	<p>Dear Mr Ball,</p> <p>As the owner and resident of x Dovehouse Close, in the vicinity of Angel Drove Car park/Cambs Business car park/The Dock car park in Ely, I wholeheartedly agree to East Cambridgeshire District Council's proposal to designate Angel Drove Car Park /Cambs Business Park car park/ The Dock car park in Ely as a PSPO under Section 59 Anti-Social Behaviour, Crime and Policing Act 2014: Certificate of consultation for making of a Public Space Protection Order, Sec 72 (3).</p> <p>We are frequently disturbed by the anti-social behaviour of certain car drivers who use these areas as a race track. This behaviour is a public nuisance and is also extremely dangerous to any members of the public who use these car parks while these activities are going on.</p> <p>Yours sincerely,</p> <p>AD</p>	Member of the public
28	Mon 21/08/2017 13:26	<p>Dear Mr Ball</p> <p>I have only just seen this on the East Cambs website so I hope I'm not too late. I am not objecting by the way, I am fully supporting this. I just want to add a comment, in that I have complained in the past regarding large groups of people and their cars being gathered at Angel Drove and finding it very intimidating, especially when they are near my car (I have had dents appear on my car and can only assume it was one or more of the gathered drivers). I have had cause to call the police because on one night in particular there was an enormous crowd of them, but apparently this was a known gathering! I also object to paying for a season ticket to park in a rubbish dump as that is how it looks after these drivers have met up. The recent addition of the concrete blocks has helped a bit I think, but even these had been moved (I noticed this morning that they had some metal bands strapping them to the ground!). However, once summer holidays are over I wondered if this would have just been a seasonal hiatus. Now there is this public space protection order in the pipeline it will, hopefully, sort the problem and be less intimidating to be in the car park 'after hours' and to be able to arrive each morning and not have to navigate the vast scattering of rubbish.</p> <p>As an extra note. I did witness two cars side by side and the occupant of one passed what looked like a fold of paper/plastic to the other. I assumed drug deal. They looked surprised when my husband and I walked by them to get to our car!</p> <p>Yours sincerely</p> <p>DB</p>	Member of the public

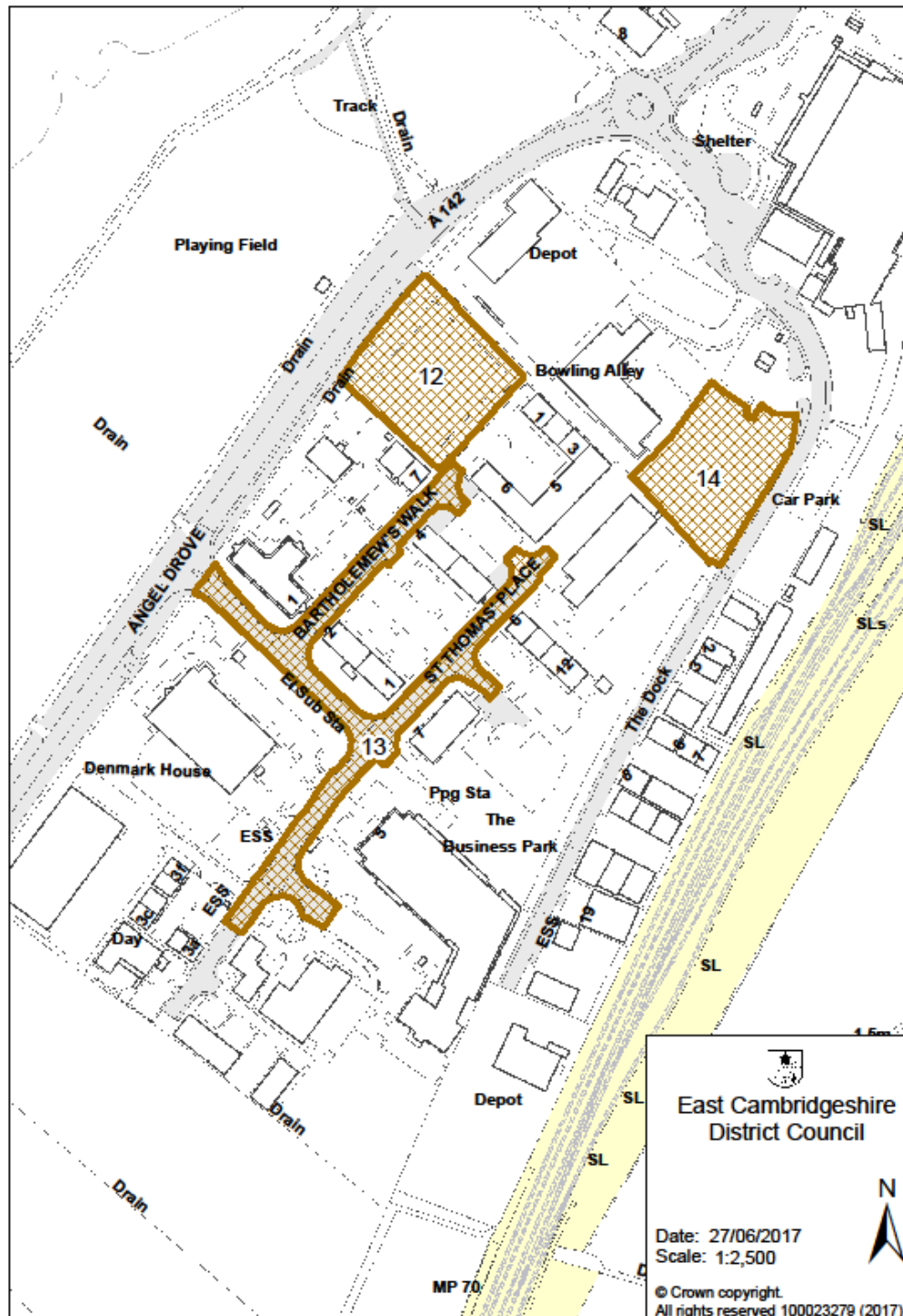
Appendix D – Map of proposed area to be designated

The area known as Angel Drove Car Park /Cambs Business Park car park/ The Dock car park in Ely (one drawn map)

12 is Angel Drove car park

13 is Cambs Business Car Park including Bartholomew's Walk/St Thomas's Place

14 is The Dock car park (the new car park due to open in November 17)



Appendix E – Draft Order

East Cambridgeshire District Council in exercise of its powers under Section 59, 64 and 72 of the Antisocial Behaviour, Crime and Policing Act 2014 ("the Act") proposes to make the following Order:-

ANTI-SOCIAL BEHAVIOUR, CRIME AND POLICING ACT 2014

SECTION 59

PUBLIC SPACES PROTECTION ORDER

East Cambridgeshire District Council

Public Spaces Protection Order

Angel Drove Car Park, Cambridgeshire Business Park Parking Area, The Dock

Car Park in Ely

Number 2 of 2017

THIS ORDER is made by East Cambridgeshire District Council ("the Council") because the Council is satisfied on reasonable grounds that activities carried out or likely to be carried out in a public space, namely Angel Drove Car Park in Ely;

- Have had or are likely to have a detrimental effect on the quality of life of those in the locality
- Are or are likely to be unreasonable and
- Justify the restrictions imposed

The Council is satisfied that the following activities have been or are likely to be carried out in the public space:

ANTI SOCIAL BEHAVIOUR (Dangerous driving and littering)

1. PERIOD FOR WHICH THE ORDER HAS EFFECT

The Order shall come into operation on TBC 2017 and shall have effect for a period of 3 years thereafter, unless extended by further orders under East Cambridgeshire District Council's (hereafter 'the Council') statutory powers.

2. RESTRICTIONS

The Order relates to Angel Drove Car Park, Cambs Business Park, The Dock Car Park in Ely as shown on the attached plan.

The effect of this Order is to make the following provisions for these areas as follows;

At ; Angel Drove Car Park, Cambs Business Park, The Dock Car Park:

- (j) Driving a motor vehicle at excessive speed causing or being likely to cause a nuisance to persons in the locality of the restricted area.
- (k) When driving a motor vehicle causing repeated sudden and rapid acceleration of the motor vehicle causing or being likely to cause a nuisance to persons in the locality of the restricted area.
- (l) Racing other motor vehicles causing or being likely to cause a nuisance to persons in the locality of the restricted area.

- (m) Performing stunts using a motor vehicle causing or being likely to cause a nuisance and/or danger to persons in the locality of the restricted area. Performing stunts includes but is not limited to doughnutting, drifting, handbrake turns, wheel spins or any other motor vehicle related activities which cause or are likely to cause a nuisance and/or danger to persons in the locality of the restricted area. Descriptions of the activities of doughnutting, hand brake turns, drifting and wheel spins are set out in the schedule.
- (n) Sounding motor vehicle horns other than in accordance with the Highway Code in a manner causing or being likely to cause a nuisance to persons in the locality of the restricted area.
- (o) Playing amplified music in a motor vehicle causing or being likely to cause a nuisance to persons in the locality of the restricted area.
- (p) Using loud and/or threatening and/or abusive language or otherwise intimidating another person in the locality of the restricted area.
- (q) Dropping litter from a motor vehicle.
- (r) Gathering in vehicles or parking vehicles in groups of two or more for the purposes of congregating and that may result in causing alarm, harassment or distress;

Description of prohibited activities at (d):

- *Doughnutting - driving around in a repetitive manner, for example in a figure of eight.*
- *Hand brake turns - using the handbrake to turn the vehicle.*
- *Drifting - use of the accelerator when going into a bend causing the tail end of the vehicle to slide.*
- *Wheel spins - use of the accelerator when the vehicle is stationary and before releasing the handbrake causing the wheels of the car to spin and noise and/or smoke to be produced.*

3. WHAT HAPPENS IF YOU FAIL TO COMPLY WITH THIS ORDER?

A person guilty of an offence under conditions (a) or (b) above, under section 67 of the Act is liable on summary conviction to a fine not exceeding level 3 on the standard scale or fixed penalty notice of a maximum £100.

APPEALS

4. Any challenge to this order must be made in the High Court by an interested person within six weeks of it being made. An interested person is someone who lives in, regularly works in, or visits the restricted area. This means that only those who are directly affected by the restrictions have the power to challenge. The right to challenge also exists where an order is varied by the Council.

Interested persons can challenge the validity of this order on two grounds: that the Council did not have power to make the order or to include particular prohibitions or

requirements; or that one of the requirements of the legislation, for instance consultation, has not been complied with.

When an application is made the High Court can decide to suspend the operation of the order pending the Court's decision, in part or in totality. The High Court has the ability to uphold the order, quash it, or vary it.

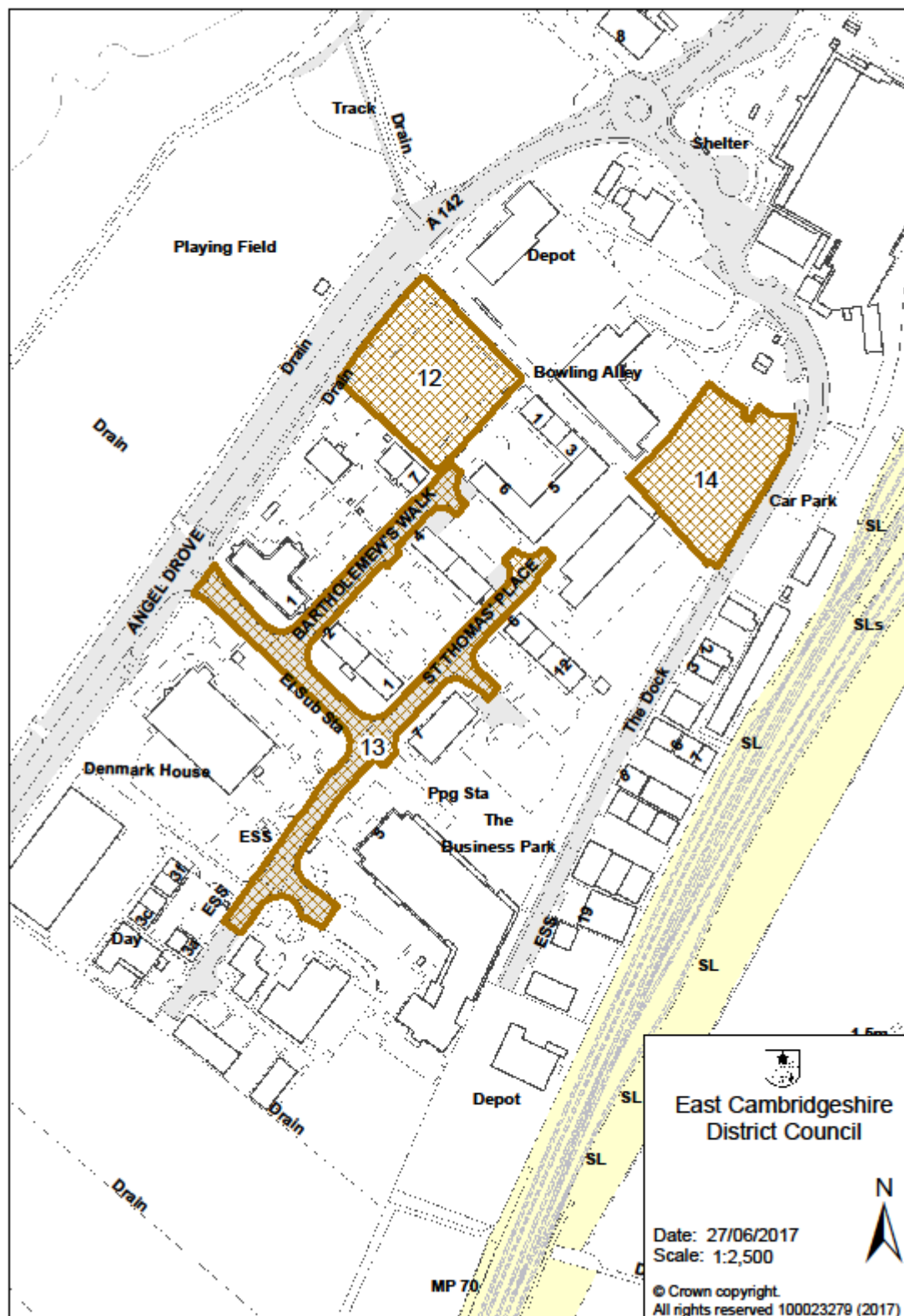
A copy of the Order plan may be obtained by contacting the address below.
nick.ball@eastcambs.gov.uk , Tel. 01353 665555 or in writing to Nick Ball,
Neighbourhood Support Officer, East Cambridgeshire District Council, The Grange,
Nutholt Lane, ELY CB7 4EE. The Order can also be seen at www.eastcambs.gov.uk

THE COMMON SEAL OF EAST CAMBRIDGESHIRE DISTRICT COUNCIL

was hereby affixed the day of 2016
in the presence of:

SCHEDULE

*(Plan showing the area covered by the East Cambridgeshire District Council
Public Spaces Protection Order No. 2 2017 outlined)*



Description of prohibited activities:

- Doughnutting - driving around in a repetitive manner, for example in a figure of

eight at the central reservations on the sea front.

- Hand brake turns - using the handbrake to turn the vehicle.
- Drifting - use of the accelerator when going into a bend causing the tail end of the vehicle to slide.
- Wheel spins - use of the accelerator when the vehicle is stationary and before releasing the handbrake causing the wheels of the car to spin and noise and/or smoke to be produced.