
TITLE: BURWELL VISIONING EVENT FEEDBACK

Committee: Burwell Masterplan Working Party

Date: 28th July 2011

Author: Sally Bonnett, Infrastructure and Projects Officer

[L66]

1.0 ISSUE

1.1 To receive a report and a presentation on the feedback from the Burwell Visioning Event held on 4th June 2011

2.0 RECOMMENDATION(S)

2.1 It is recommended that the Working Party note and comment on the issues identified as appropriate.

3.0 BACKGROUND

3.1 The Burwell Visioning Event was held in Burwell on Saturday 4th June 2011 and attended by 17 Parish Councillors and people representing local groups and organisations. The purpose of the event was:

- To identify some of the key issues for Burwell
- To establish priorities for future of Burwell
- To start work towards some initial options for any future development

3.2 The information gathered would be used to inform the production of a 'Burwell Vision' for inclusion in the District Councils revised Core Strategy.

4.0 THE REPORT

4.1 The appendix to this document contains a report that has been produced regarding the Visioning Event.

4.2 The Infrastructure and Projects Officer will give a presentation to the meeting regarding the feedback.

5.0 FINANCIAL IMPLICATIONS/EQUALITY IMPACT ASSESSMENT

5.1 It is anticipated that much of the work will be carried out in-house, utilising the skills and experience officers have gained from producing the previous Masterplans. The cost of consultation and printing will be met from existing budgets.

5.2 An Equality Impact Assessment (INRA) will need to be carried out on the final Burwell Masterplan document.

6.0 APPENDICES

6.1 Burwell Visioning Event Feedback Report

<u>Background Documents</u>	<u>Location</u>	<u>Contact Officer</u>
None	The Grange, Ely	Sally Bonnett, Infrastructure and Projects Officer E-mail: Sally.bonnett @eastcambes.gov.uk

Burwell Visioning Event Feedback Report

The Burwell Visioning Event, organised by East Cambridgeshire District Council, was held in Burwell on Saturday 4th June 2011 and attended by 17 Parish Councillors and people representing local groups and organisations. The purpose of the event was:

- To identify some of the key issues for Burwell
- To establish priorities for future of Burwell
- To start work towards some initial options for any future development

The information gathered would be used to inform the production of a 'Burwell Vision' for inclusion in the District Council's revised Core Strategy.

The session commenced with a presentation from Giles Hughes, Head of Planning and Sustainable Development and Sally Bonnett, Infrastructure and projects Officer, from East Cambridgeshire District Council. The presentation covered the purpose and structure of the session and focussed on key baseline information about Burwell.

The first group session of the event required attendees to identify the issues that Burwell is facing using the SWOT (strengths, weaknesses, opportunities and threats) technique, decide which they regarded as the key issues and then establish priorities for Burwell's future. Each group then fed back to the wider group.

The second group session focussed on ideas and the attendees drew their proposals onto large maps, working towards some initial options. Each group then presented their map to the wider group. Copies of the maps can be found at the end of this report

SWOT Feedback

Group 1 – SWOT results

- Sense of community
- Number of community groups
- Proximity to Cambridge, Newmarket and Ely
- Nature Reserve/Wildlife sites, National Trust properties
- Tourism
- Character – winding roads and character buildings
- Safe place
- Sewerage/water supply/drainage

- School places
- Nothing for youth in the village
- School related traffic
- Further development will mean infrastructure system will collapse
- Want houses with larger plots and bigger gardens
- Lots of events and activities organised but some are undersubscribed or poorly supported/attended.
- Need a large site for sports activities
- Parking
- Need more disabled parking bays
- Existing green spaces are small and dispersed
- Industrial traffic issue
- Small roads and narrow access points
- Ageing population – will lose volunteers
- Facilities for disabled people poor, wheelchair access an issue
- Risk of over development – stay a village or become town?
- Public transport
- Lots of services
- Can live without going out of village
- Apathy in village
- Burwell Bulletin
- Lack of first time buyer homes/affordability of housing
- Lack of retirement homes

Priorities:

- Infrastructure as a whole but in particular schools/roads/sewage
- Provision for ageing population – access and parking
- Housing Growth – in particular:
 - Properties for First time buyers
 - Social housing
 - Expansion of retirement/supported properties
- Want to retain village feel
- Larger sports field
- Core Strategy allocations for employment sufficient and suitable.

Group 2 - SWOT results

Community

Strengths:

- Strong community spirit/commitment
- Volunteering
- Community services/local shops etc
- Day Centre
- Print Centre, training for people with learning difficulties

Weaknesses:

- Need for more sports facilities – football/cricket/swimming pool
- Ageing population

Opportunities:

- Facilities for the elderly
- Youth facilities

Threats:

- Primary School at capacity

Economy

Strengths:

- Lots of small businesses
- Tourism facilities – B&B, caravan sites
- Proximity to Ely, Newmarket, Bury St. Edmunds.

Weaknesses:

- Lack of industrial units
- Office units
- Poor retail offer – people travel to Newmarket to shop

Opportunities:

- Industrial site
- Potential for small specialist retail (clothes)

Threats:

- None

Environment

Strengths:

- Access to country
- Wildlife sites
- Country walks

Weaknesses:

- Traffic
- Sewage
- HGV's to Industrial sites

Opportunities:

- Improve public realm

Threats:

- Sewage Treatment Works at capacity

Transport

Strengths:

- Bus Service to Cambridge
- Cycling Routes
- Minibus to Ely (x2 monthly)
- Access to major roads

Weaknesses:

- No public transport to Ely
- Problems getting 6th formers to school
- No cycle track to Exning or footpath
- Strategic parking space
- Evening public transport
- Roads need upgrading

Opportunities:

- New car park
- Community transport
- New transport company
- New School transport
- Bypass

Threats:

- Through traffic

Group 3 - SWOT results

Strengths:

- Sense of community
- Good facilities
- Dial-a-ride
- Lodes Way
- Good access to countryside
- Day Centre
- Post Office/Bank
- Museum
- Lovely church
- Pub/tea room
- Caravan Park
- Travellers site in village

Weaknesses:

- No secondary school – pupils split between Bottisham and Soham (70:30)
- Facilities need improving – ageing facilities
- Limited car parking

- Public transport
- Evening/Sunday public transport weak
- School full to capacity
- Youth facilities could be better
- Sewerage
- No shopping centre – shops stretched over village
- Unplanned growth – eyesore
- Traffic on High Street – rat run
- HGV's – through route
- Reduced policing presence

Opportunities:

- Opportunity for Vision
- Decent design
- More employment
- Pull sporting facilities together
- More shops
- Need path/cycle path between Exning and Burwell
- Boost tourism
- Boost boating facilities
- Threats

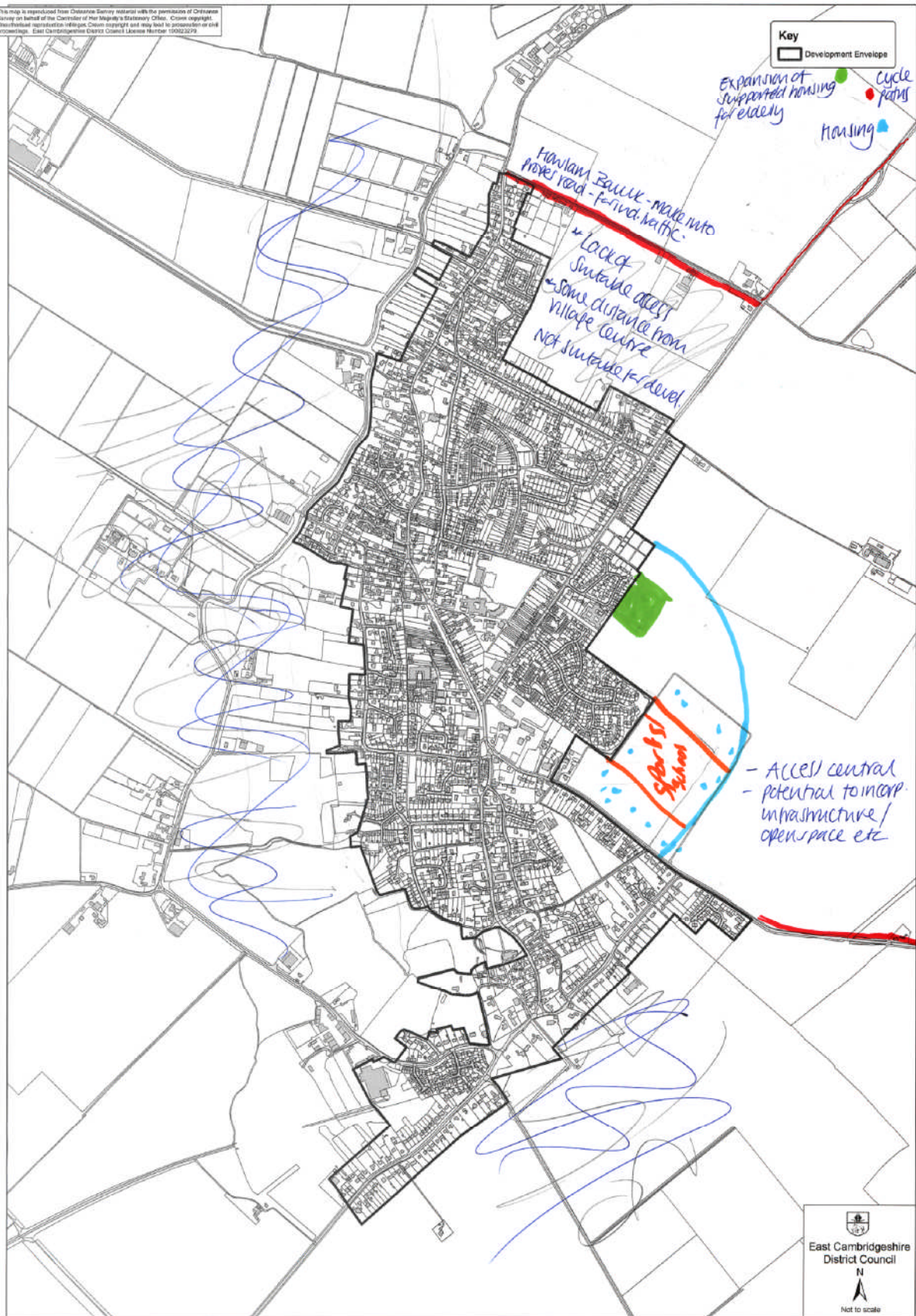
Threats:

- Loss of facilities, pub etc.
- Housing growth without infrastructure
- Loss of Fire Service
- Loss of public funding for facilities

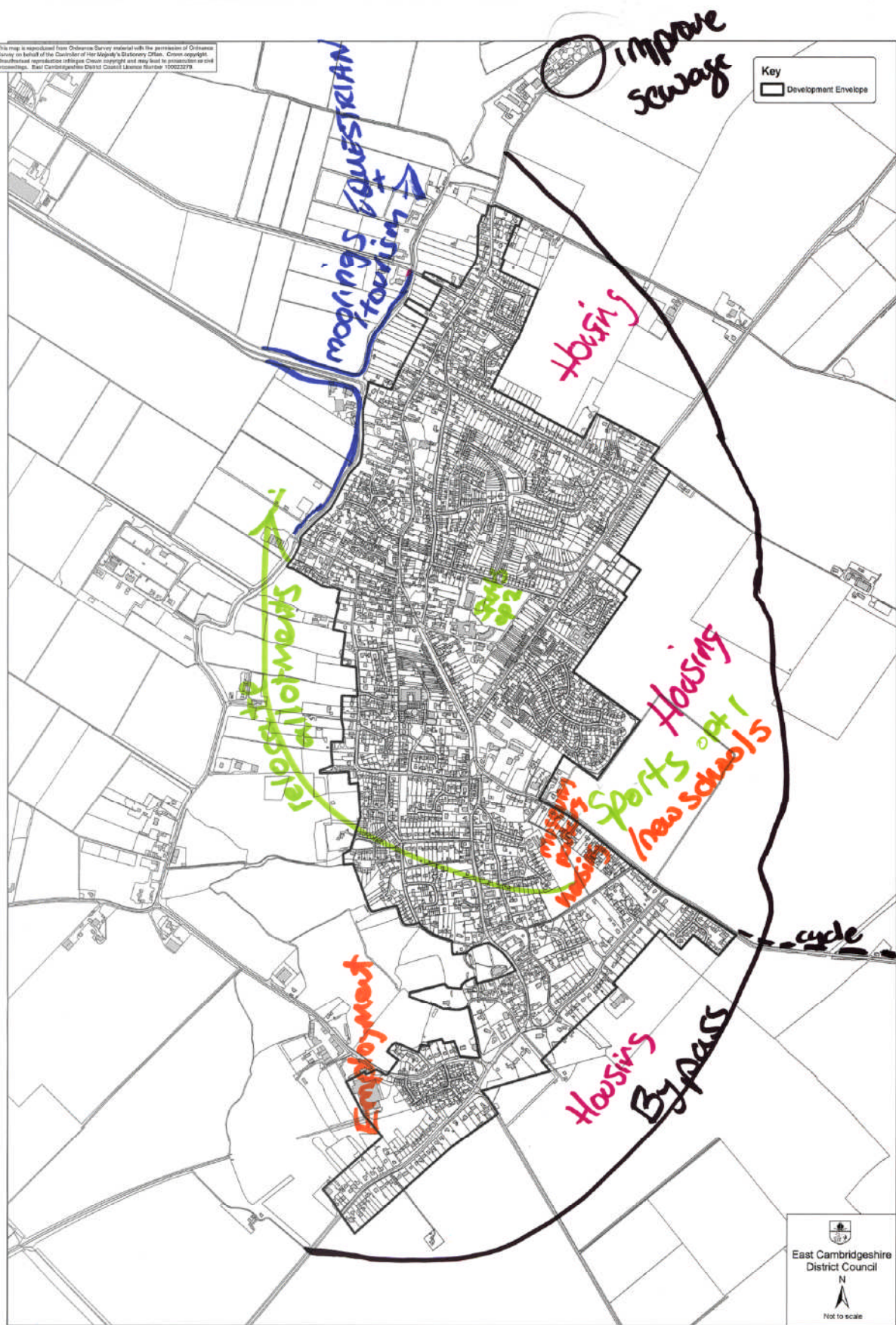
Priorities:

- School full to capacity
- Sewerage
- More employment
- Pull sporting facilities together
- Boost tourism
- Boost boating facilities

This map is reproduced from Cheshire Safer material with the permission of Cheshire Safer on behalf of the Controller of Her Majesty's Stationery Office. Crown copyright. Unauthorised reproduction infringes Crown copyright and may lead to prosecution or civil proceedings. East Cheshire District Council License Number 10002079



This map is reproduced from Ordnance Survey material with the permission of Ordnance Survey on behalf of the Controller of Her Majesty's Stationery Office. Crown copyright. Unauthorised reproduction infringes Crown copyright and may lead to prosecution or civil proceedings. East Cambridgeshire District Council License Number: 10002279



This map is reproduced from Ordnance Survey material with the permission of Ordnance Survey on behalf of the Controller of Her Majesty's Stationery Office. Crown copyright. Unauthorised reproduction is illegal. Crown copyright and may lead to prosecution or civil proceedings. East Cambridgeshire District Council Licence Number 10002079

