

Summary of current play from information provided by Woodditton Parish Council

This Summary of Play report has been produced by East Cambridgeshire District Council following the 2012-13 Play Audit on behalf of parish councils to help guide their planning and funding for new or upgrading play facilities.

The report includes details of current provision and any issues highlighted by the Parish Council when completing the consultation. The findings are based on information provided by the parish council during 2012-13 and have been compared to the local planning standards which provide a benchmark on provision that should be available according to population size.

The findings indicate where there may be deficits and will be useful for parishes that are considering any improvements or enhancing play provision to address deficits or growth.

Play Provision and Informal Open Space

The table below identifies all play areas and areas of informal open space in Woodditton, using information provided by Woodditton Parish Council in 2012-13.

Map Ref	Location	Category ¹	Age Group(s)	Size (hectares)
2B	St. John 's Avenue/Kings Drive	Play Area	TJ	0.08
2C	The Street	Play Area	TJ	0.02
2D	School Road	Play Area	TJ	1.97
3A	School Road	Informal Open Space	NA	8.89

T = Toddler (2 to 5 year olds)

J = Junior (6 to 12 year olds)

Y = Youth (13 to 18 year olds)

¹ Play Area: A space with equipment sited for the purpose of enabling children and young people to play legitimately (including Skate Parks)

Informal Open Space: Areas of informal space (not used for formal sports), including parks, kick-about areas, green corridors and village greens.

Map illustrating the locations of existing play areas and areas of informal open space.

The following map illustrates the locations of play areas and areas of informal open space in Woodditton.

Radial travel distances have been outlined to illustrate catchment areas for each play area. The radial travel distances are a part of the East Cambs planning standard for play areas set out in the East Cambs Sports Facilities & Play Areas Assessment 2005.

Toddler: Approx 600m straight line distance

Junior: Approx 600m straight line distance

Youth: Approx 1000m straight line distance

ECDC Assessment of play provision and informal open space against the local planning standard

East Cambs Planning Standards for Play Areas and Informal Open Space

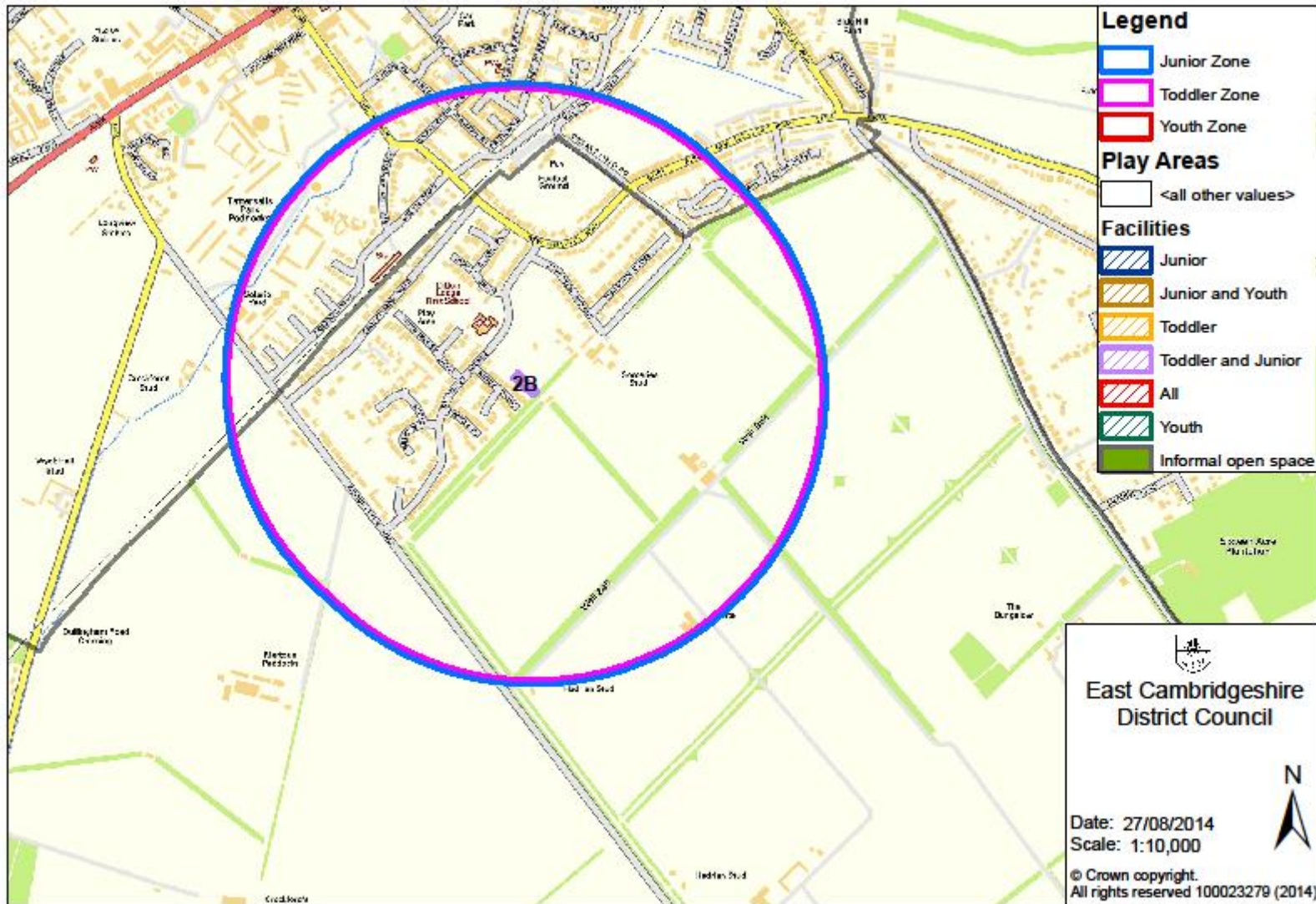
Local provision standards set by the East Cambs Sports Facilities & Play Areas Assessment 2005 and the East Cambridgeshire Informal Open Space Study 2005 were used to measure against existing provision in order to determine whether or not there is a surplus or deficit of provision.

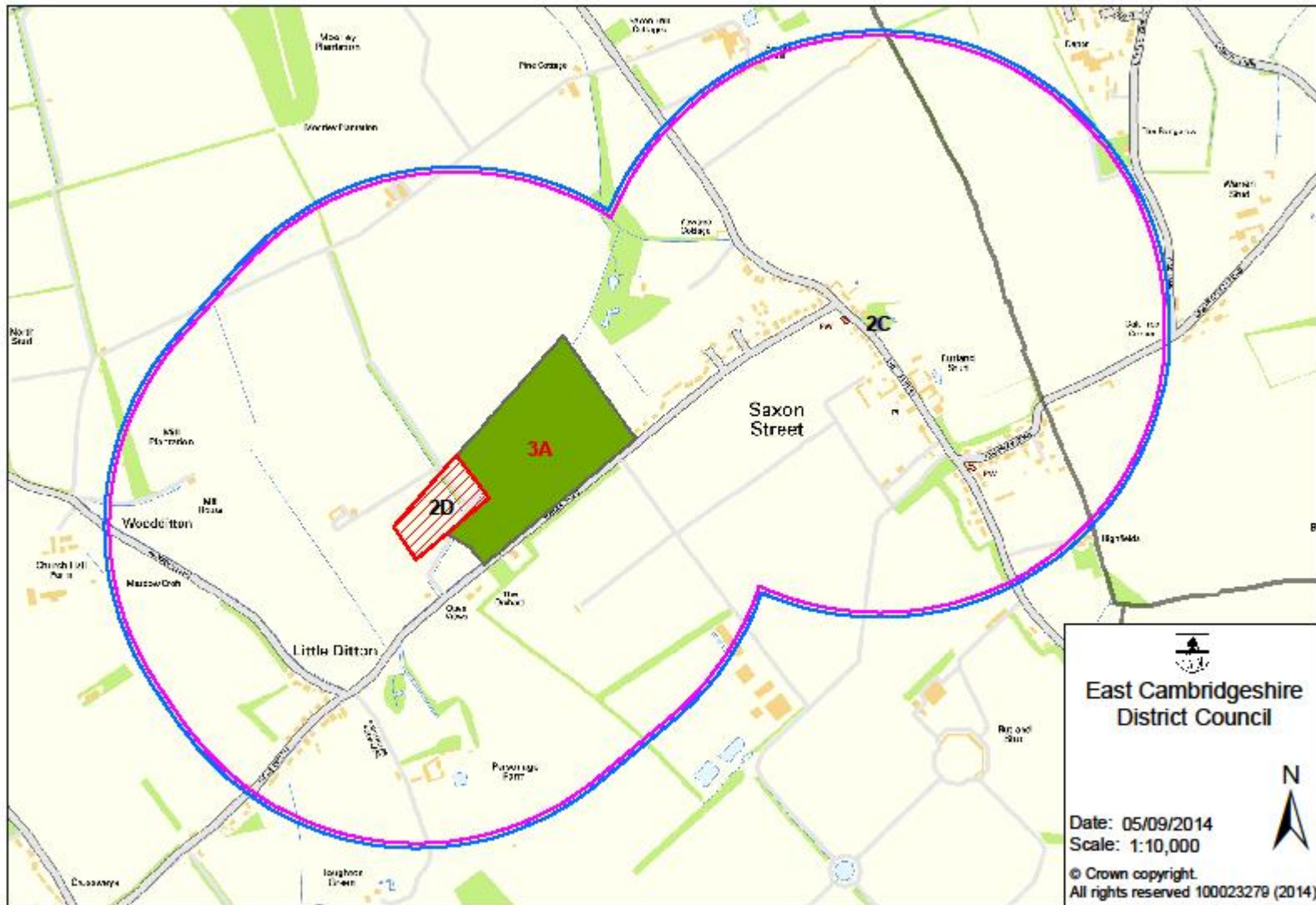
Category of Space	Space per person (m²)	Standard size of area (ha)
Informal Open Space	25 square metres (2.5 ha)	
Toddler Outdoor Play Space (2 to 5 years old)	0.2 square metres (0.02 ha)	0.01 ha
Junior Outdoor Play Space (6 to 12 years old)	0.8 square metres (0.08 ha)	0.04 ha
Youth Outdoor Play Space (13 to 18 years old)	1 square metres (0.1 ha)	0.1 ha

Population

1818²

² 2011 Census, Neighbourhood Statistics, January 2013





Informal Open Space (hectares)		
Actual	Requirement	Deficit/ Surplus
8.89 hectares	4.55 hectares	4.34 hectares

Toddlers (facilities)		
Actual	Requirement	Deficit/ Surplus
207 facilities	3.64 facilities	203.36 facilities

Juniors (facilities)		
Actual	Requirement	Deficit/ Surplus
51.75 facilities	3.64 facilities	48.11 facilities

Youths (facilities)		
Actual	Requirement	Deficit/ Surplus
0.00 facilities	1.82 facilities	-1.82 facilities

- deficit
- surplus
- no response
- incomplete response

Analysis of existing provision in Woodditton

There are currently three play areas in Woodditton and one area of informal open space.

Deficits and surpluses of provision

The play areas in Woodditton cater for toddlers and juniors.

Woodditton Parish Council advised that there are sufficient play areas and areas of informal space to meet the existing community need. This is partly supported by the audit findings as there is a surplus of play provision for toddlers and juniors, however there is a deficit in youth play provision based upon the planning standard per head of population. Woodditton has the highest surplus of toddler play provision in East Cambridgeshire.

The map identifies that the majority of houses in the parish of Woodditton fall within the radial travel distances of toddler and junior provision based on local planning standards. As there is no youth play provision in Woodditton, the entire parish falls outside of the catchment area for youth provision. Woodditton village and Ditton Green falls outside of all play area catchment areas.

Any areas of open space with pitch markings or containing sporting infrastructure (e.g. goal posts, basketball hoops) have not been included in this audit as they are categorised as formal open space/sports pitches.

Range of Play Experiences

A range of play equipment is available for toddlers and juniors in Woodditton.

Accessibility

The parish council advise that the play areas in Woodditton have equipment available for children with disabilities.

Play Space Quality Assessment

Woodditton Parish Council scored the existing play areas using a modified version of Play England's Play Space Quality Assessment Tool Kit which considered the following criteria:

- Level of usage
- Maintenance
- Health & Safety
- Location
- Range of play experiences

All play areas were scored 4 (good) or 5 (excellent) in all categories apart from St. John's Avenue which scored a 3 (average) for location, however it was noted that this play area was still well used.

Consultation

The following consultation has been carried out by the parish council regarding play and informal open space:

- Complete parish survey carried out in June 2006 for the Parish Plan
- Focused survey carried out in Ditton Green, Little Ditton and Saxon Street early in 2011.

Future Development

In 2005, the parish council leased a large community field in School Road, Saxon Street. This is currently being developed by the parish council. New play equipment was installed in January 2012 along with sports provision (5-a-side football goals). There are plans to develop the site further in the future.

Further information

Fields in Trust protection

Protecting outdoor recreational space is vital for the health and wellbeing of communities now and in the future, and to increase wildlife diversity and provide habitat.

Fields in Trust works with landowners to protect outdoor spaces with legal documentation. The landowner will nominate the site and a deed of dedication is drawn up by Fields in Trust and signed by both parties. There's no transfer of ownership or management to Fields in Trust.

For further information on safeguarding outdoor recreational space, visit www.fieldsintrust.org.

Best Practice Guidance

Attached you will find up-to-date, best practice guidance on play area development, with information on the following:

- Location
- Design
- Access and inclusion
- Consultation and participation
- Quality
- Risk Management

Promotion of online tools

The following websites may provide useful information regarding play and open space, along with helpful ways to promote your existing facilities:

Fields in Trust Protected Fields Map
www.fieldsintrust.org

East Cambridgeshire District Council
www.eastcambs.gov.uk

Play England Nature Play Map
<http://www.playengland.org.uk/nature-play-map.aspx>