

## **Summary of current play from information provided by Burrough Green Parish Council**

This Summary of Play report has been produced by East Cambridgeshire District Council following the 2012-13 Play Audit on behalf of parish councils to help guide their planning and funding for new or upgrading play facilities.

The report includes details of current provision and any issues highlighted by the Parish Council when completing the consultation. The findings are based on information provided by the parish council during 2012-13 and have been compared to the local planning standards which provide a benchmark on provision that should be available according to population size.

The findings indicate where there may be deficits and will be useful for parishes that are considering any improvements or enhancing play provision to address deficits or growth.

### **Play Provision and Informal Open Space**

The table below identifies all play areas and areas of informal open space in Burrough Green, using information provided by Burrough Green Parish Council in September 2012.

| Map Ref | Location  | Category <sup>1</sup> | Age Group(s) | Size (hectares) |
|---------|-----------|-----------------------|--------------|-----------------|
| 3A      | The Green | Informal Open Space   | NA           | 1.898258632     |

T = Toddler (2 to 5 year olds)

J = Junior (6 to 12 year olds)

Y = Youth (13 to 18 year olds)

#### **Map illustrating the locations of existing play areas and areas of informal open space.**

The following map illustrates the locations of play areas and areas of informal open space in Burrough Green.

Radial travel distances have been outlined to illustrate catchment areas for each play area. The radial travel distances are a part of the East Cambs planning standard for play areas set out in the East Cambs Sports Facilities & Play Areas Assessment 2005.

Toddler: Approx 600m straight line distance

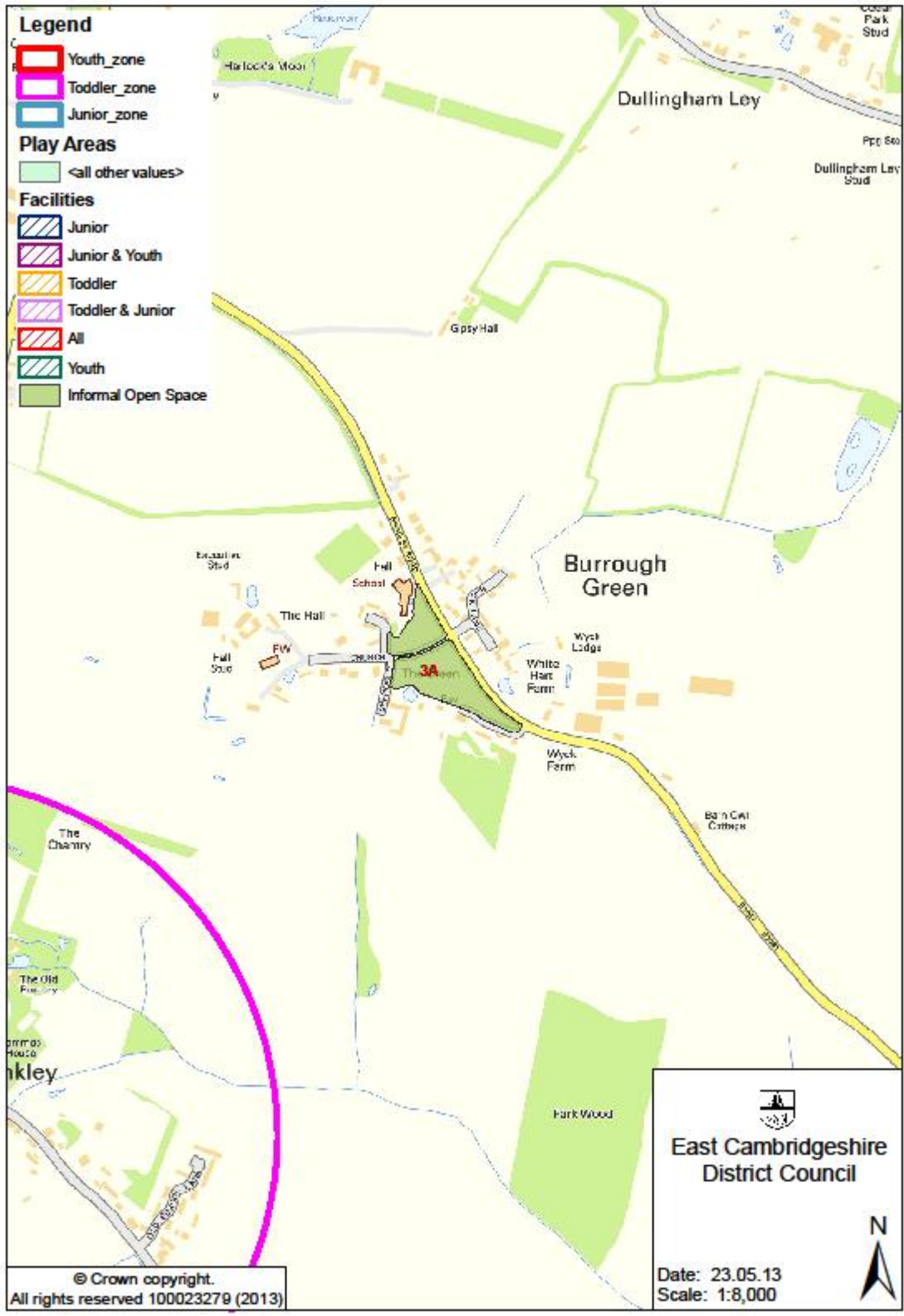
Junior: Approx 600m straight line distance

Youth: Approx 1000m straight line distance

---

<sup>1</sup> Play Area: A space with equipment sited for the purpose of enabling children and young people to play legitimately (including Skate Parks)

Informal Open Space: Areas of informal space (not used for formal sports), including parks, kick-about areas, green corridors and village greens.



## **ECDC Assessment of play provision and informal open space against the local planning standard**

### East Cambs Planning Standards for Play Areas and Informal Open Space

Local provision standards set by the East Cambs Sports Facilities & Play Areas Assessment 2005 and the East Cambridgeshire Informal Open Space Study 2005 were used to measure against existing provision in order to determine whether or not there is a surplus or deficit of provision.

| <b>Category of Space</b>                      | <b>Space per person (m<sup>2</sup>)</b> | <b>Standard size of area (ha)</b> |
|---|---|-----------------------------------|
| Informal Open Space                           | 25 square metres (2.5 ha)               |                                   |
| Toddler Outdoor Play Space (2 to 5 years old) | 0.2 square metres (0.02 ha)             | 0.01 ha                           |
| Junior Outdoor Play Space (6 to 12 years old) | 0.8 square metres (0.08 ha)             | 0.04 ha                           |
| Youth Outdoor Play Space (13 to 18 years old) | 1 square metres (0.1 ha)                | 0.1 ha                            |

### Population

379<sup>2</sup>

---

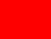



<sup>2</sup> 2011 Census, Neighbourhood Statistics, January 2013

| Informal Open Space (hectares) |                   |                     |
|--------------------------------|-------------------|---------------------|
| Actual                         | Requirement       | Deficit/<br>Surplus |
| 1.898<br>hectares              | 0.948<br>hectares | 0.951<br>hectares   |

| Toddlers (facilities) |                    |                     |
|-----------------------|--------------------|---------------------|
| Actual                | Requirement        | Deficit/<br>Surplus |
| 0.00<br>facilities    | 0.76<br>facilities | -0.76<br>facilities |

| Juniors (facilities) |                    |                     |
|----------------------|--------------------|---------------------|
| Actual               | Requirement        | Deficit/<br>Surplus |
| 0.00<br>facilities   | 0.76<br>facilities | -0.76<br>facilities |

| Youths (facilities) |                    |                     |
|---------------------|--------------------|---------------------|
| Actual              | Requirement        | Deficit/<br>Surplus |
| 0.00<br>facilities  | 0.38<br>facilities | -0.38<br>facilities |

|   |                     |
|---|---------------------|
|  | deficit             |
|  | surplus             |
|  | no response         |
|  | incomplete response |

## **Analysis of existing provision in Burrough Green**

There are currently no play areas in Burrough Green and one area of informal open space.

### **Deficits and surpluses of provision**

As Burrough Green has no play areas, there are deficits in toddler, junior and youth play provision, however there is a surplus of informal open space.

Burrough Green Parish Council advises that there is adequate provision of informal open space and this is backed up by the audit findings.

There is a play feature in Burrough Green however this is only accessible to children attending the school during school time.

### **Future development**

The parish council has advised that it has identified a location for a new playground in the Village. An independent Management Committee has been set-up to fund raise and manage the design/construction of the new playground (£40,000 of fund raising is required).

The landowner has agreed to lease the land. Planning permission will be submitted for change of use from agricultural land.

### **Consultation**

Burrough Green Parish Council has advised that questionnaires were circulated around the village to gauge demand and support for a playground. 90% of respondents indicated that they would like a playground in the village. 90% of the children in the village are 0-11, this would be the intended age range for the playground.

## **Further information**

### **Fields in Trust protection**

Protecting outdoor recreational space is vital for the health and wellbeing of communities now and in the future, and to increase wildlife diversity and provide habitat.

Fields in Trust works with landowners to protect outdoor spaces with legal documentation. The landowner will nominate the site and a deed of dedication is drawn up by Fields in Trust and signed by both parties. There's no transfer of ownership or management to Fields in Trust.

For further information on safeguarding outdoor recreational space, visit [www.fieldsintrust.org](http://www.fieldsintrust.org).

### **Best Practice Guidance**

Attached you will find up-to-date, best practice guidance on play area development, with information on the following:

- Location
- Design
- Access and inclusion
- Consultation and participation
- Quality
- Risk Management

### **Promotion of online tools**

The following websites may provide useful information regarding play and open space, along with helpful ways to promote your existing facilities:

Fields in Trust Protected Fields Map  
[www.fieldsintrust.org](http://www.fieldsintrust.org)

East Cambridgeshire District Council  
[www.eastcambs.gov.uk](http://www.eastcambs.gov.uk)

Play England Nature Play Map  
<http://www.playengland.org.uk/nature-play-map.aspx>