



DisabledGo

Cambridgeshire County Council



Our History

"Improve the lives of disabled people, promoting independence and choice"



Feedback

“Disability is the death of spontaneity”

Accessible to who?

“If I don’t know, I don’t go”

“Access information is as important as opening hours and location detail”

“To provide essential, detailed information that enables greater choice and independence for anyone with access requirements”

Our Access Guides



Detailed

1000 + pieces of
information per
Access Guide



Factual

Objective
information
Facts, measurement
and photographs



User Driven

100+ engagement
events
Access in the
widest sense

Our Access Guides



In Person

Experienced
surveyors
Unique technology
In person reviews



Consistent

Standardised
information across
the UK and multi site
trusts



Quality Assured

Accredited
processes
ISO 9001

Our Impact



350+ Partners

Mix of
public and private
sector clients



Growing Reach

Over 1m unique users
each year
20% growth p.a



Integration

Part of your offer
Putting access
information
where it is needed



Choice

Over 125,000
venues
surveyed so far

Our Partners



Local Authorities

100 + partners



Education

110 + partners



NHS

50 + partners



Private Sector

70 + partners

Plans for 2018

- New responsive website – mobile, tablet, laptop and desktop
- Further increases in accessibility functionality
- Free App – all platforms
- Access information available 24/7 on the go
- New brand to better reflect our reach beyond ‘traditional’ disability

[Home](#)[About Us](#)[Places to Go](#)[How to use DisabledGo](#)[News and Blog](#)

Search here for accessible places to go...

Popular: Restaurants Hotels Public Houses & Bars Parks & Gardens Cafes Museums Universities

More
Information
[scroll down](#)



[Home](#)
[News and Blog](#)

[About Us](#)

- Esperanto
- Estonian
- Filipino
- Finnish
- French
- Galician
- Georgian
- German

Language



[Login/Register](#) |  

[How to use DisabledGo](#)

Search here for accessible places to go...

e.g. hotels, parks...

e.g. town, city or postcode

10 Miles

[Search](#)

Popular: Restaurants Hotels Public Houses & Bars Parks & Gardens Cafes
Museums Universities

More Information
[scroll down](#)

[Home](#)

[About Us](#)

[Places to Go](#)

[How to use DisabledGo](#)

[News and Blog](#)

Search here for accessible places to go...



Miles

Search

Popular: Restaurants Hotels Public Houses & Bars Parks & Gardens Cafes Museums Universities

More Information
[scroll down](#)

[Home](#)

[About Us](#)

[Places to Go](#)

[How to use DisabledGo](#)

[News and Blog](#)

Search here for accessible places to go...

10

Miles

Search

[Close](#)

[Public Houses & Bars](#) [Parks & Gardens](#) [Cafes](#) [Museums](#) [Universities](#)

Motorpoint Arena
Sheffield

More
Information
[scroll down](#)



[Places to Go](#)[Search Places to Go](#)

You Are Here: [Home](#) > [Places to Go](#) > [Search Places to Go](#) > The North East

The North East

Local Authority

[Barnsley Metropolitan Borough Council](#)[City of Bradford Metropolitan District Council](#)[City of York Council](#)[Durham County Council](#)[Newcastle City Council](#)[Rotherham Metropolitan Borough Council](#)[Sheffield City Council](#)

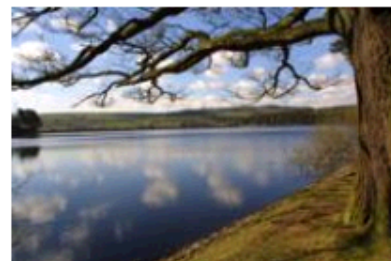
Education

[Bradford College](#)[Durham University](#)[Leeds Beckett University](#)[Lincoln College](#)[Newcastle College](#)[Sheffield Hallam University](#)[Sunderland College](#)[The Sheffield College](#)[University of Hull](#)[University of Leeds](#)[University of Sheffield](#)

Health

[Sheffield Teaching Hospitals NHS Foundation Trust](#)


- Scotland
- North East
- East Anglia
- London
- South East
- South West
- Wales
- Midlands
- North West
- Northern Ireland
- Republic Of Ireland



Sheffield City Council

Sheffield City Council

Howden House
1 Union Street
Sheffield
South Yorkshire
S1 2SH
England

 0114 2734567

[View Our Venues](#)



Sheffield has a lot to offer, we are England's fourth largest city with a diverse population of over 550,000 people, home to two of Britain's top Universities, the UK's top outdoor city, and have the largest theatre complex outside of London.

Therefore in line with Sheffield City Council's continued commitment to our Fairness Commission Principles and tackling inequality, we are pleased to work with DisabledGo, Disability Sheffield and The AccessCard to support this guide as part of our Accessible Sheffield Project. This will help us deliver on our ambition to become an accessible and fairer city for all who live, work, study and or visit here.

We hope this project will also encourage all organisations whether large or small to improve accessibility for people across the city. We hope this will help enable people to build greater independence and will promote choice and wellbeing.

For the Council and our partners, breaking down the barriers people face to accessing their community, civil life, leisure opportunities, employment and education makes financial as well as social sense. An accessible city is great for everyone who lives in or visits Sheffield, we don't want anyone excluded from enjoying what our city has to offer.

On behalf of Sheffield City Council I hope you find this guide useful and enjoy the time that you spend in Sheffield.

Sheffield.

[Please click here for the Meadowhall Shopping Centre DisabledGo access guide.](#)

[Please click here for The University of Sheffield DisabledGo access guide.](#)

[Please click here for the Sheffield College DisabledGo access guide.](#)

[Please click here for the Sheffield Hallam University DisabledGo access guide.](#)

Cllr Jack Scott

Sheffield City Council - Cabinet Member for Community Services and Libraries

[View All Sheffield City Council Venues](#)

Accessible Public Toilets and Changing Places Venues	Expand +
Community Places Venues	Expand +
Entertainment, Culture and Leisure Venues	Collapse -

[Activities](#)

[Bookmakers](#)

[Children's Play Area](#)

[Farm](#)

[Golf Clubs](#)

[Libraries](#)

[Parks & Gardens](#)

[Restaurants](#)

[Sports Grounds & Stadiums](#)

[Tourist Attractions](#)

[Arts Centre](#)

[Bowling Centres](#)

[Cinemas](#)

[Fitness Suites and Gymnasiums](#)

[Internet Cafes](#)

[Museums](#)

[Public Houses & Bars](#)

[Skate Rinks](#)

[Swimming Pools](#)

[Watersports Centre](#)

[Attitude is Everything Music Venues](#)

[Cafes](#)

[Conservation Areas & Nature Reserves](#)

[Galleries](#)

[Leisure Centres](#)

[Nightclubs](#)

[Racecourses](#)

[Special Olympics](#)

[Theatres](#)

[View All Entertainment, Culture and Leisure Venues within Sheffield City Council](#)

Public and Professional Services Venues	Expand +
Retail and Shopping Venues	Expand +
Travel and Accommodation Venues	Expand +

Customise your results

Make the website work for you by customising your results based on your own requirements:

Step 1: Click on any symbol(s) to match your needs.

Step 2: Click on "update results" to show all the places suited to you.

Refine Your Results

Current Search

You searched for "libraries"
sheffield city council

[Update Results](#)

Facilities

[More Info](#)

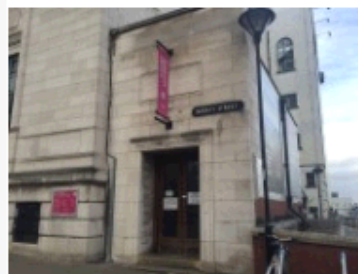


Rating



0 to 5 star selected

Sort By:



Central Children's Library



Central Library, Surrey Street, Sheffield, S1 1XZ

0114 273 4734

kidsandteens.library@sheffield.gov.uk

<https://www.sheffield.gov.uk/libraries/all-libraries/centralchild...>

Guide Last Updated: 02/04/2015

[View Detailed Access Guide](#)



Central Lending Library



Central Library, Sheffield, S1 1XZ

0114 273 4727

centrallending.library@sheffield.gov.uk

<https://www.sheffield.gov.uk/libraries/all-libraries/centrallendi...>

Guide Last Updated: 07/05/2015

[View Detailed Access Guide](#)



Chapelton Library



Nether Ley Avenue, Sheffield, S35 1AE

0114 203 7000

<http://www.sheffield.gov.uk>

Guide Last Updated: 30/08/2016

[Home](#)

[About Us](#)

[Places to Go](#)

[How to use DisabledGo](#)

[News and Blog](#)

You Are Here: [Home](#) > [Places to Go](#) > Venue



Concord Sports Centre



Guide Last Updated: 16/03/2016



[Explain These Icons](#)

[Add To My Trip](#)

[View the Access Guide](#)

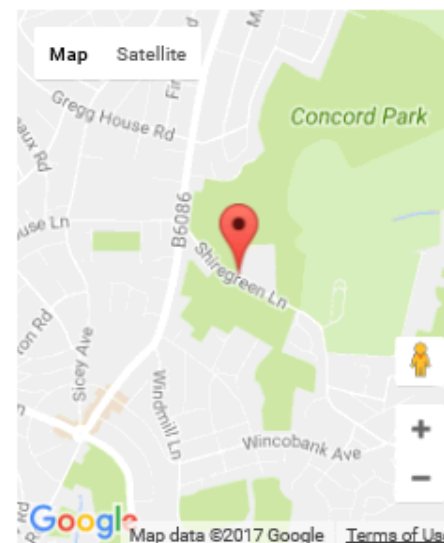
Shiregreen Lane, Sheffield, S5 6AE

0114 257 0053

info@concordsportscentre.co.uk

<http://www.sivltd.com/concord>

[Something Changed? Click Here](#)



Venue Reviews

Average Rating: ★★★★★

[Review this Venue](#)

Access Guide

Introduction	Expand +
Location	Expand +
Opening Times	Expand +
Parking	Expand +
Outside Access (Main Entrance)	Expand +
Reception	Expand +
Inside Access	Expand +
Fitness Suite	Expand +
Swimming Pool	Expand +
Other Floors	Expand +
Lift	Expand +
Accessible Changing Room	Expand +
Changing Places	Expand +
Accessible Shower	Expand +
Accessible Toilet	Expand +
Standard Changing Room (Wet Side)	Expand +
Standard Changing Room (Dry Side)	Expand +
Standard Toilet(s)	Expand +
Additional Info	Expand +

Location

Collapse -

- There is a bus stop within 150m (164yds) of the venue.
- The nearest National Rail station is Meadow Hall Interchange.
- There is not a tram stop within 150m (164yds) of the venue.

Opening Times

Expand +

Parking

Collapse -

- The venue does have its own car park.

Venue Car Park

Collapse -

- Parking is free for all users.
- The car park is located at the front of the venue.
- The car park type is open air/surface.
- Parking spaces for Blue Badge holders do not need to be booked in advance.
- There is/are 10+ designated parking bay(s) within the car park.
- The dimensions of the designated parking bay(s) are 500cm x 600cm (16ft 5in x 19ft 8in).
- The nearest designated bay is 10m (10yd 2ft) from the main entrance.
- The furthest designated bay is 40m (43yd 2ft) from the main entrance.
- The route from the car park to the entrance is accessible to a wheelchair user with assistance.
- Assistance may be required because there is / are dropped kerbs.
- The car park surface is tarmac.



Outside Access (Main Entrance)

Collapse -

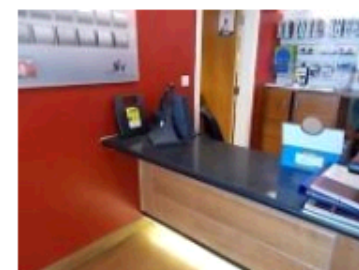
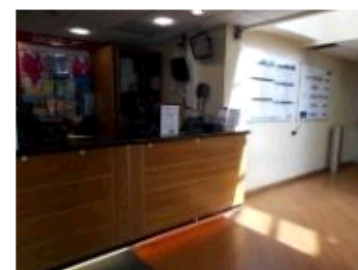
- This information is for the entrance located at the front of the building.
- There is level access into the venue.
- The main door(s) open automatically.
- The doors are double width.
- The door opening is 160cm (5ft 3in) wide.



Reception

Collapse -

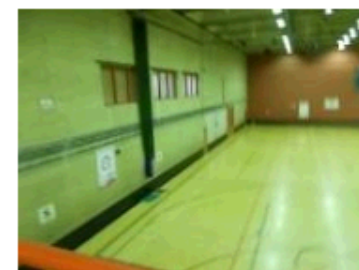
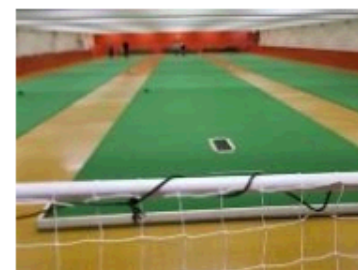
- The desk is 13m (14yd 8in) from the main entrance.
- There is level access to reception from the entrance.
- The reception desk is medium height (77cm - 109cm).
- The desk has a low (76cm or lower) section.
- The lighting levels are medium.
- There is a hearing assistance system.
- The hearing system is not available only on request.
- The type of system is a fixed loop.
- Staff are trained to use the system.



Inside Access

Collapse -

- There is level access to the service.
- There is not a hearing assistance system.
- This venue does not play background music.
- Motorised scooters are allowed in public parts of the venue.
- The lighting levels are medium.



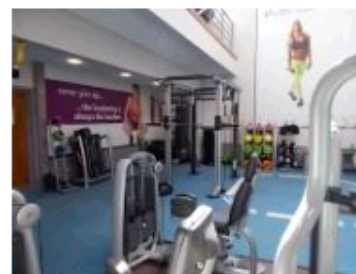
Access to Fitness Suite

Collapse -

- The fitness suite is located at the rear of the venue.
- The fitness suite is 35m (38yd 10in) from the main entrance.
- There is level access to the fitness suite.
- There are doors into the fitness suite.
- The doors open towards you (pull).
- The doors are single.
- The doors are heavy.
- The opening is 80cm (2ft 7in) wide.

Fitness Suite (General)

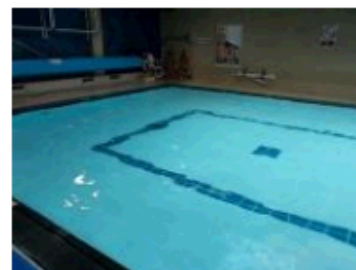
Expand +



Swimming Pool

Collapse -

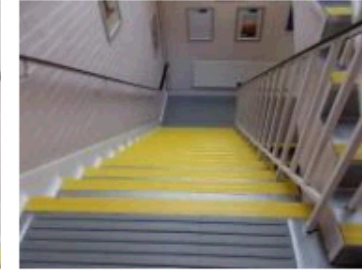
- There is level access from the changing area to the swimming pool.
- There is not a ramped entrance into the water.
- There is a wet side chair available.
- There is a hoist for wheelchair users to access the water.
- The hoist is manual.
- There are not steps into the swimming pool.
- There is a ladder type entrance into the water.
- There is a handrail on both sides of the ladder.



Steps

Collapse -

- The floors which are accessible by stairs are G-1-2-3.
- There are 15+ steps between floors.
- The steps are clearly marked.
- The steps are medium (11cm - 17cm).
- The steps do have handrails.
- The steps have a handrail on both sides.
- There is a landing.
- The lighting levels are medium.



Lift

Collapse -

- There is a lift for public use.
- The lift is located in the reception area.
- The lift is a standard lift.
- The floors which are accessible by this lift are G-1-2-3.
- The lift is 8m (8yd 2ft) from the main entrance.
- Staff do not need to be notified for use of the lift.
- The clear door width is 80cm (2ft 7in).
- The dimensions of the lift are 100cm x 120cm (3ft 3in x 3ft 11in).
- There are separate entry and exit doors in the lift.
- There is not a mirror to aid reversing out of the lift.
- The lift does not have a visual floor indicator.
- The lift does not have an audible announcer.
- The controls for the lift are within 120cm from the floor.



Location and access

Expand +

Dimensions and features

Expand +



Accessible Shower

Expand +

Accessible Toilet

Collapse -

Location and Access

Expand +

Features and Dimensions

Expand +

Position of Fixtures

Expand +

Colour Contrast and Lighting

Expand +



Standard Changing Room (Wet Side)

Expand +

Standard Changing Room (Dry Side)

Expand +

Standard Toilet(s)

Expand +

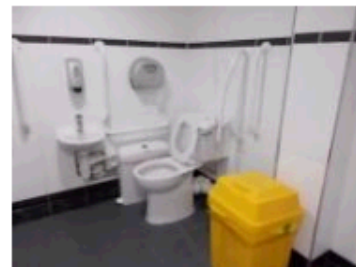
Additional Info

Expand +

Location and Access

Collapse -

- There are accessible toilets within this venue designated for public use.
- The toilet is for the sole use of disabled people.
- There is pictorial signage on or near the toilet door.
- The accessible toilet is 20m (21yd 2ft) from the main entrance.
- The accessible toilet is located off the main corridor.
- There is level access to the accessible toilet.



Features and Dimensions

Collapse -

- This is a unisex toilet.
- A key is required for the accessible toilet.
- The key is a radar key.
- The key can be obtained from a member of staff.
- The door opens outwards.
- The door is locked by a twist lock.
- The width of the accessible toilet door is 90cm (2ft 11in).
- The door weight is light.
- The dimensions of the accessible toilet are 260cm x 260cm (8ft 6in x 8ft 6in).
- There is sufficient turning space in the cubicle for a wheelchair user.
- There is a lateral transfer space.
- As you face the toilet pan the transfer space is on the right.

Position of Fixtures

Collapse -

- Wall mounted rails are available.
- As you face the toilet the wall mounted grab rails are on both sides.
- There is not a shelf within the accessible toilet.
- There are mirrors.
- Mirrors are placed at a lower level or at an angle for ease of use.
- The height of the toilet seat above floor level is 43cm (1ft 5in).
- There is a hand dryer.
- The hand dryer cannot be reached from seated on the toilet.
- The hand dryer is not placed higher than 100cm (3ft 3in).
- There is not a towel dispenser.
- There is a toilet roll holder.
- The toilet roll holder can be reached from seated on the toilet.
- The toilet roll holder is not placed higher than 100cm (3ft 3in).
- There is a sink.
- The sink can be reached from seated on the toilet.
- The sink is not placed higher than 74cm (2ft 5in).



Colour Contrast and Lighting

Collapse -

- The contrast between the external door and wall is good.
- The contrast between the internal door and wall is good.
- The contrast between the grab rails and wall is poor.

Availability and Location of Standard Toilets

Expand +

Access to Standard Female and Male Toilet(s)

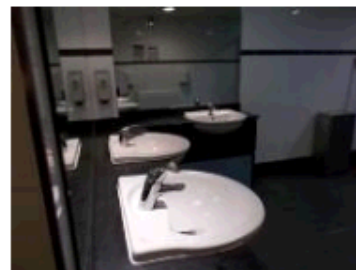
Collapse -

- The female and male toilets are located to the right of the main corridor.
- The female and male toilets are 10m (10yd 2ft) from the fitness suite.
- Inside the venue, there is level access to the female and male toilets.
- Lighting levels are medium.

Baby Change Facilities

Collapse -

- Baby change facilities are located within the venue.
- Baby change facilities are located in the changing village.
- The height of the baby change table once extended is 80cm (2ft 7in).
- Inside the venue, there is level access to the baby change facility.



Additional Info

Collapse -

- Staff do receive disability awareness / equality training.
- A bowl of water can be provided for an assistance dog.
- An assistance dog toilet area can be provided onsite.
- A member of staff trained in BSL skills is not normally on duty.

Contact



Rachel Carter

(Partnership Manager)

rachel.carter@disabledgo.com

01438 842710