



# **Ely Neighbourhood Panel Update**

**July 2012**

## East Cambridgeshire District Council – Action Updates:

Priority: None Set

### Other Issues Raised at the Panel meeting:

No.	Issue	Action Taken
1	The subway under the railway bridge does give a bad impression to visitors and other residents when coming into Ely. May we suggest that more resources are used in cutting the grass verges and picking up the litter? Perhaps pressure could be put on to Tesco to help clear up the area.	<p><b>Response from Rachel Doyle ECDC Environmental Services Dept</b></p> <p>Tesco's are actually very good and have a paid dedicated litter picker who clears specific areas as and when required around the Tesco site. ECDC has previously written to Rail Track whose responsibility it is to maintain the subway areas, and we will write to them again, following feedback from the panel.</p>
2	There has been a marked increase in the amount of litter strewn on the grass verges of Lisle Lane since the opening of Sainsbury's.	<p><b>Response from Rachel Doyle ECDC Environmental Services Dept</b></p> <p>We will contact Sainsbury's about working together to reduce the problem. If litter is reported in the area we will continue to clear the area within the litter code of practice timescales.</p>
3	Has any progress been made on the future of the former Magistrates Court as it has now been closed for some considerable time and presumably deteriorating inside with no attention. We do not want another of Ely's historic buildings falling into a state of disrepair! Priority use of the building was we thought supposed to be for the community.	<p><b>Response from Alan Dover ECDC Planning</b></p> <p>The courthouse is completely weather tight at the moment and is not suffering from any deterioration. The Ministry of Justice commissioned Rapleys to carry out a survey of the building to look at its historical significance, so that there is a clear understanding of which parts need to be retained, and whether or not alterations could be made to other parts. The report is being finalised at the moment. Once that has been completed, it will be sent to the County Council and ECDC prior to being made public.</p> <p>There is going to be a meeting of the stakeholders on Tuesday 31st July, in the court building. It will be held in the form of a debated forum, to look at the various alternatives for the building. The bodies attending will be:-</p> <p>ECDC City of Ely Council Cambridgeshire County Council Ministry of Justice</p>

		English Heritage Ely Perspective Ely Museum Ely Society
4	Cigarette Butt bins need to be issued to commercial premises – Vauxhall Dealership in particular could benefit.	<p><b>Response from Rachel Doyle ECDC Environmental Services Dept</b></p> <p>Commercial premises should supply their own cigarette butt bins if they are required. We can take action for littering if butts are being left on public land. We will contact Vauxhall to discuss.</p>
5	Cigarette Butt Bins could be installed around the benches.	<p><b>Response from Rachel Doyle ECDC Environmental Services Dept</b></p> <p>Budget does not currently allow for this. Once butts are stubbed out, they can be placed in a litterbin. We will schedule in some litter patrols for this area.</p>
6	Streets need chewing gum cleaning off.	<p><b>Response from Rachel Doyle ECDC Environmental Services Dept</b></p> <p>Chewing Gum clearance is done every 6 – 8 weeks, it is next due to be done during July.</p>
7	Frequency of waste collection in the City Centre?	<p><b>Response from Rachel Doyle ECDC Environmental Services Dept</b></p> <p>Litter bins are emptied everyday, household waste collection is done on a weekly basis (Friday), and the crew try to clear the area as early as possible.</p>
8	Cigarette Butt bins need to be issued to commercial premises – Vauxhall Dealership in particular could benefit.	<p><b>Response from Rachel Doyle ECDC Environmental Services Dept</b></p> <p>Commercial premises should supply their own cigarette butt bins if they are required. We can take action for littering if butts are being left on public land. We will contact Vauxhall to discuss.</p>
9	Car parking query as to current position?	<p><b>Response from East Cambs District Cllr Peter Moakes</b></p> <p>"The District Council is currently looking at all options related to car parking in Ely for example we have spoken to the City of Ely Council to discuss ideas they have put forward. Over the next few months, the authority will be talking to a number of different groups to ensure a wide range of views are taken into account as we move forward."</p> <p><b>Response from John Hill, Chief Executive East Cambs District Council</b></p> <p>A draft proposal for consultation will be taken to Development and Transport Committee in September 2012.</p>

<p>Rail excursions (Steam) into Ely encouraged by Ely Perspectives but now appears to be less of a priority, with only one trip arranged for this year that only takes people out of Ely. Could a reason for this be explained and the decision be reviewed?</p>	<p><b>Response from Tracey Harding, ECDC Team Leader Tourism and Town Centre Services</b></p> <p>Ely's Tourist Information has always supported Cathedral's Express visits to Ely. We work with them to provide relevant information and images for their website and to ensure that when the visitors arrive they are briefed on how best to spend their time in Ely, putting on additional tours and extending opening hours where possible. In addition, we always greet the trains on the platform with two of our costumed guides. On 7th June we welcomed 300 visitors to Ely and are looking forward to welcoming another set of visitors on Sunday 26th August and Tuesday 11th September. We have therefore not reduced our promotion work with them and in fact have featured their visits in our annual Visitor Guide for 2012.</p>
--	--

### Current Organisational Issues:

**Dog fouling and fly tipping stats here:**

## Ely Neighbourhood Panel

[illegible]

	Apr	May	Jun	Jul	Aug	Sep	Oct	Nov	Dec	Jan	Feb	Mar	Total
2012/13	26	24											
2011/12	27	23	23	25	28	38	43	30	32	54	0	0	323
2010/11	47	15	35	31	33	16	28	20	19	18	30	28	320
2009/10	41	20	24	39	17	40	24	35	32	27	32	57	388
2008/09	42	19	30	37	32	30	50	28	18	47	29	37	399

[illegible][illegible]

Prosecution	0	0	0	0	0	0	0	0	0	0	0	0	0	0
-------------	---	---	---	---	---	---	---	---	---	---	---	---	---	---

## Fly Tipping Enforcement Options

Investigation	Inspection of fly tip for evidence that could lead to enforcement action being taken, together with related enquiries.
Warning letter	Used where formal enforcement action is not considered appropriate as a warning of the potential consequences of further infringements.
Statutory Notice	A legal requirement to provide information that will assist with investigation of an offence.
Fixed Penalty Notice	Agreement to accept a standard penalty fee as an alternative to formal legal action.
Duty of Care Inspection	Check that a business has correct arrangements in place for the storage, transport and disposal of its waste.
Stop & Search	Check on vehicle carrying waste for waste carriers licence and waste disposal documentation.
Formal Caution	An offender having admitted an offence is formerly cautioned by the Head of Service. A record is kept of the Caution for 5 years.
Formal Caution With Costs	As Formal Caution, but investigation and clear up costs are charged to the offender.
Prosecution	Formal prosecution through the Court System.

## Dog Fouling Reports 2012/13

### Ely Neighbourhood Panel

Parish/Village	Fouling Reports												Total
	Apr	May	Jun	Jul	Aug	Sep	Oct	Nov	Dec	Jan	Feb	Mar	
Chettisham		0	0										
Ely		1	1										2
Prickwillow		0	0										0
Queen Adelaide		0	0										0
Shippea Hill		0	0										0
Stuntney		0	0										0
<b>Month total</b>		<b>1</b>	<b>1</b>	<b>0</b>	<b>0</b>	<b>0</b>	<b>0</b>	<b>0</b>	<b>0</b>	<b>0</b>	<b>0</b>	<b>0</b>	<b>2</b>

### Total Dog Fouling Reports in East Cambridgeshire

	Apr	May	Jun	Jul	Aug	Sep	Oct	Nov	Dec	Jan	Feb	Mar	Total
2012/13		7	6										
2011/12		5	4	0	1	1	6	4	12	10	24	33	157
2010/11		4	7	7	8	4	5	9	8	13	19	21	117
2009/10		2	4	1	4	1	0	7	3	8	11	14	64

## Cambridgeshire County Council – Action Updates:

**Priorities: None set**

**Other Issues Raised at the Panel meeting:**

No.	Issue	Action Taken
1.	In the present economic climate when councils are cutting back I would like to know, why are the new streetlights on Lisle Lane continually on and who is paying for the electricity?	<p><b>Response from Street Lighting Balfour Beatty</b></p> <p>Further to your email, all installations of street lighting in Lisle Lane remain the responsibility of the developer including energy charge until Cambridgeshire County Council adopt. At the moment there are a number of remedial works, including the columns day burning that need addressing.</p> <p>The developer has been informed.</p>

## Current Organisational Issues:

### Transport Funding for Cambridgeshire

A successful bid to Government has secured £9 million extra cash for transport in Cambridgeshire, which will be used to reduce congestion and help grow the economy.

On 25 May 2012 Cambridgeshire County Council was awarded £5m from the Government's Local Sustainable Transport Fund. This is the equal highest amount awarded to any local authority, and is the full amount the Council bid for. This will boost the local economy and, given the national importance of Cambridgeshire, will help support the UK's overall economic recovery.

The Government grant unlocks further funding of £4.2 million to be spent on transport improvements, including links to the proposed new Cambridge Science Park Station and improvements at Ely Station. Funding will also hasten the delivery of a new cycle parking facility at Cambridge Station.

The bid will fund a programme of measures aimed at improving journeys within two of the most important transport corridors in Cambridgeshire. Together these measures will provide more choices for those using the two stations, and reduce traffic and congestion.

The first area covers an east-west corridor starting at the Enterprise Zone at Alconbury, through Huntingdon, St Ives, the Science Park area (where the new Cambridge Science Park Station will be located) and ending at Cambridge. The second north-south corridor starts at Ely, runs through the Science Park area and again ends at Cambridge.

Both of these routes contain major employment sites and new housing developments that will experience significant growth in the coming years. Both have good existing public transport links, either rail or guided bus, which will be enhanced significantly by this funding. Improving links in these areas will help people travel between home and work, and for other purposes by foot, bicycle, bus and train.

Improvements will range from infrastructure schemes such as new or improved cycle routes, and cycle parking, through to better public transport systems and enhanced signage and maps.

Households in the areas will be offered help in finding out more about their travel options for getting to work, school or other important journeys.

The programme will also improve the availability and quality of travel information, such as upgrades to the Real Time Passenger Information system which provides live bus journey information for passengers. Improvements to travel information will benefit travellers across the whole county, not just in the corridor area.

Funding will be spent between 2012 and 2015.

The bid was prepared in partnership with a wide range of local partners, from both the public, private and voluntary and community sectors.

The programme should help tackle congestion, which is a major issue on both corridors, and causes costly delays for local businesses, residents and visitors.

Cambridgeshire County Councillor Ian Bates, Cabinet Member for Growth and Planning, said: "This is great news for Cambridgeshire and is part of our drive to invest in measures to improve our infrastructure to show that Cambridgeshire is open for business. We are delighted the Government has recognised that our plans will not only boost the local economy but will help the national economy grow as well. The fact we got the joint largest grant in the country shows how good our bid was. This means more opportunities for business, more jobs and a better quality of life for our residents. These measures complement the work we are already carrying out such as the bold move to invest in creating a new Cambridge Science Park station. They will also bring broader benefits across the whole County and build on the public transport and cycling improvements that we are already making."



### **Trading Standards warn people not to get caught by the conmen**

Cambridgeshire Trading Standards are urging residents to be extra vigilant and not get caught out by conmen. Every year in the UK consumers lose billions of pounds worth of money to scams that often exploit low-cost mass-marketing techniques such as e-mail, telephone and post.

Misleading mailings make false promises of huge lottery wins or other high-value prizes but always insist on a payment being made before any winnings can be claimed. One local victim of a telephone lottery fraud sent over £9,000 to Spain and Ireland in 'fees' for fictitious lottery wins in a 15 month period.

Often the elderly or vulnerable are specifically targeted by scammers but this is not always the case. Targets can find themselves on the receiving end of a barrage of letters with some people being sent up to 600 misleading letters a month from across the world. Anyone who has a friend or relative who may be responding to scams, or has been a victim themselves should contact Citizens Advice Consumer Service on 08456 040506.

Cambridgeshire Trading Standards has joined forces with Cambridge Citizens Advice Bureau to run a year-long pilot Consumer Empowerment Partnership (CEP). Together this partnership will work to prevent fewer people falling victim to scams.

To report a scam mailing, even if it has not been responded to, use the Action Fraud online reporting at <http://www.actionfraud.police.uk/> or by calling 0300 123 2040.

### **Buy With Confidence approved trader scheme**

Cambridgeshire County Council's Trading Standards Service recently launched the Buy With Confidence approved trader scheme.

This scheme provides residents with an online database of local 'Trading Standards approved' businesses which can be relied upon to provide a quality service to customers. Members can be found by visiting [www.buywithconfidence.gov.uk](http://www.buywithconfidence.gov.uk), by calling Trading Standards advice partner on 08454 040506 or by visiting your local library and asking library staff to look up traders on the scheme for you.

For businesses wishing to join, comprehensive information and application forms are available at [www.buywithconfidence.gov.uk](http://www.buywithconfidence.gov.uk) or by calling 0345 0455206. The public are also being called on to nominate traders to join the scheme by emailing the traders details to [bwc@cambridgeshire.gov.uk](mailto:bwc@cambridgeshire.gov.uk) or by calling Cambridgeshire Direct on 0345 0455206. Trading Standards will then contact the traders to invite them to apply.

Buy With Confidence encourages businesses to comply with the spirit and letter of the law. Trading Standards carries out various checks on applicants before admitting them to the scheme. If any issues are found while carrying out these checks, advice will be offered to resolve these, supporting businesses to meet the requirements of the scheme.

Benefits to members include being able to advertise their business as 'Trading Standards approved', having their business details added to the Buy With Confidence database and being provided with an ongoing advice service from Trading Standards.

Buy with Confidence schemes operate in nearly 50 local authority areas, with over 4,700 businesses signed up. For more information visit [www.buywithconfidence.gov.uk](http://www.buywithconfidence.gov.uk)

**Social care information sessions at Cambridgeshire Libraries.** An information service which helps people stay safe, well and independent, is taking to the road to spread the word across Cambridgeshire with a series of events in libraries. The Your Life, Your Choice service provides online information for people who need information or support to enable them to live an independent life. It also provides details of assistance for such things as social and health care and aids and home adaptations which make life easier for people in their own home.

The roadshows schedule includes a presence at Ely Library for the period 10 July to 4 August 2012. At the roadshow there will be:

- Leaflets and information about staying independent, safe and well
- Information on aids and devices to help people remain independent
- Trading Standards information on how to Buy With Confidence and avoid rogue traders
- Information about Direct Payments for social care
- Opportunities to book a session with the libraries' Computer Buddies to help less experienced computer users access online information.

The Your Life, Your Choice website was developed with the support of service users, carers and our partners in the public, private and voluntary sectors, to encourage people to think more widely than just traditional care services when planning the support they need. Access to the Your Life, Your Choice website together with help to find the information you are looking for is already available in your local library or you can access information and advice directly at: [www.yourlifeyourchoice.org.uk](http://www.yourlifeyourchoice.org.uk)

<<http://www.yourlifeyourchoice.org.uk>>

### **Cambridgeshire Libraries announce summer reading challenge**

All libraries in Cambridgeshire will be hosting the "Story Lab" Reading Challenge this summer. The Reading Challenge aims to keep children reading during the summer holidays and every child who reads 6 books or more will receive a certificate and medal at special presentation ceremonies in September. When children sign up, they will receive their own 3D model laboratory where they can keep track of their reading progress. As they read, they collect stickers [some with "scratch and sniff" panels] to give them a real sense of achievement as they work their way through the bronze, silver and gold stages and many libraries will have "Reading buddies" on hand to help and encourage children and there will be a range of exciting supporting activities. Children who take part in the Reading Challenge every summer benefit in all kinds of ways:

- they head back to school happier, more confident readers
- the scheme helps prevent youngster's reading levels from "dipping" during the long break
- Going to the library regularly becomes an activity the whole family can enjoy together.

Children can sign up for free at their local library from Monday 16<sup>th</sup> July and last year over 6,500 Cambridgeshire children took part. For more information contact Children's Library Services Manager, Richard Young on (01480) 376269 or via e-mail, at: [Richard.young@cambridgeshire.gov.uk](mailto:Richard.young@cambridgeshire.gov.uk)

## **Sanctuary Housing – Action Updates:**

**Priorities: None set**

**Other Issues: None set**

**Current Organisational Issues:**

### **Sanctuary has moved from their offices in St Mary's Lodge.**

You can now find all your Sanctuary Housing and District Council - related services under one roof.

- Benefits advice
- Find a home
- Advice on money matters
- Report a repair

- Computer access
- Jobs search
- And much more

You can contact us at: -

In person: East Cambs District Council. The Grange, Nutholt Lane, Ely, CB7 4EE

By post: Avro House, Lancaster Way Business Park, Ely, CB6 3NW

By telephone:

- General housing and rent enquiries: Tel 0800 916 1422
- Repairs & maintenance: Tel 0800 916 1450 or 01482 486205, text 07824 609748, Type Talk 01482 580576
- Our of hours anti-social behaviour helpline: 0800 916 1522

## City of Ely Council – Action Updates:

**Priorities: None set**

**Other Issues Raised at the Panel meeting:**

No.	Issue	Action Taken
	The Chase - Lighting is an issue. Could solar be a viable option?	<b>Response from Tracey Coulson City of Ely Council</b> Cambs County Council are looking at the options of installing the same solar lights that this Council has installed in the Park. If they feel these would be effective enough to light this footpath between the Chase and Tower Road, it is very possible that this will be funded from the Market Town Transport Strategy for Ely. This of course, will also depend on the cost.

## East Cambridgeshire Local Policing Team – Action Updates:

### Priorities:

Priority 1 : Alcohol related ASB in and around the Cathedral Area	
<b>Objective</b>	<b>Alcohol related ASB in and around the Cathedral Area</b>
<b>Action Taken</b>	<p>During this Panel Period patrols have taken place within the DPPO on a daily basis. On the majority of the days patrols have taken place three times a day. We have focused our patrols to cover 1600 – 1700 hrs as this was identified as the peak offence times, especially on a sunny weekend.</p> <p>Throughout the period we have maintained a log of all the patrols, who was spoken to or seen and what action, if any. Was taken.</p> <p>The majority of patrols did not identify any offences. Quite often we found the regular group of street drinkers and associates in the vicinity of the Cathedral but unless we had reports of ASB or we witnessed any offences, no further action was taken. This is in the spirit of the DPPO and is a proportionate response.</p> <p>However, during patrols during this panel period we did deal with the following:</p> <ul style="list-style-type: none"> <li>• A well known local female was spotted acting suspiciously in the vicinity of the Cathedral. She was stopped by officers in plain clothes and found to be in possession of 4 wraps of Heroin.</li> <li>• During patrols 2 persons were found who were wanted for unrelated criminal matters. They were arrested and put before the Courts.</li> <li>• Two of the regular group seen in the vicinity of the Cathedral are and have been through Rehabilitation and are currently doing well and keeping out of the area.</li> <li>• During the panel period needles (believed to be for illegal drug use rather than medicinal) were found in the public toilets by the Cathedral. We are unable to trace this to an individual at this stage.</li> </ul> <p>One male was issued a Section 27 dispersal notice from just outside the DPPO area due to his behaviour. This notice banned him from the vicinity for 48 hours and made it a criminal offence if he returned during that time frame. He did not return.</p>

Priority: Obstructive and Inappropriate Parking.	
<b>Objective</b>	<b>Obstructive and Inappropriate Parking.</b>
<b>Action Taken</b>	<p>Patrols have continued in and around the Cathedral area. Patrols are taking place on a daily basis and are getting a mixture of results. During the day we appear to have a core group of individuals who congregate on the greens surrounding the Cathedral.</p> <p>When seen by Police and found to be in possession of alcohol the group are moved on and alcohol removed.</p> <p>Several of the encounters have resulted in no further action due to there being no offences or breaches of the DPPO.</p> <p>A meeting was held between the residents, members of the Cathedral and East Cambs District Council to address this matter. This was a succesful meeting and one that will be repeated for the foreseeable future.</p> <p>It is apparent that at least one of the group has a dog that has been reported to be out of control. This matter is being addressed with the local dog warden at this time.</p> <p>Patrols will continue at the appropriate times. Due to the current restructuring of Staff and shifts it is hoped that the patrols can increase in number and in at the key offending times. This should start to take affect from 01 May 2012.</p> <p>Officers have continued to patrol the area during the night time hours as well as the other key areas within the City on a Friday and</p>

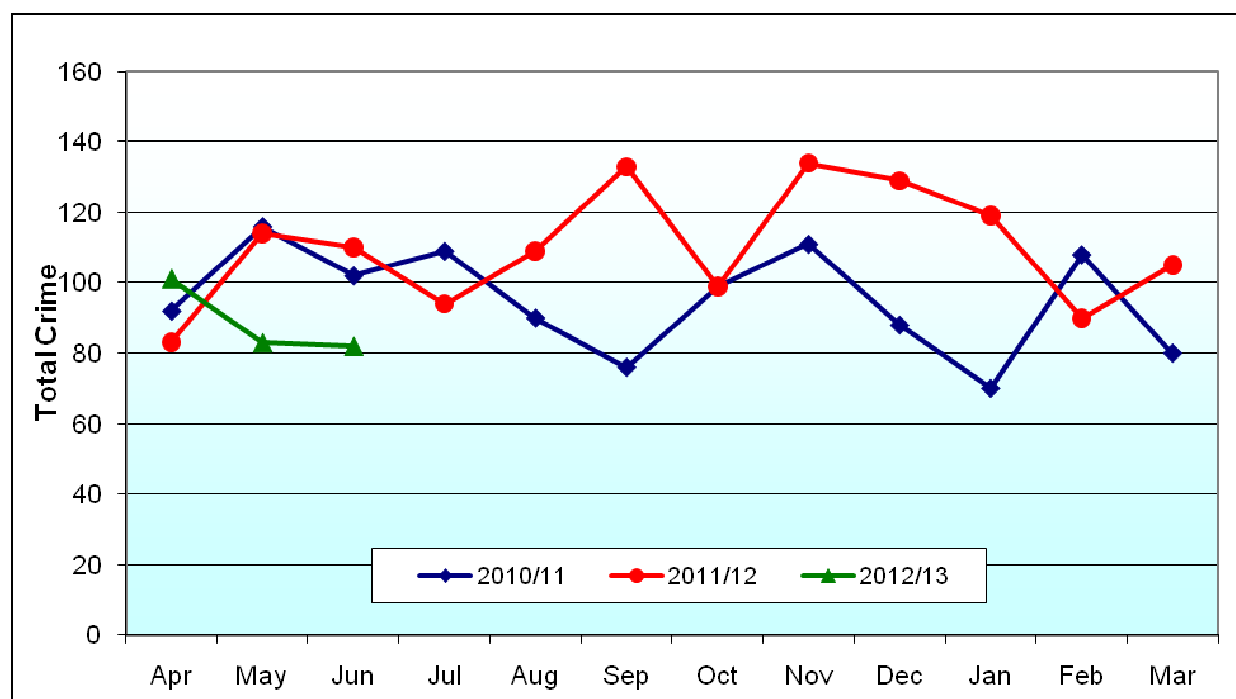
Saturday night.

### Other Issues Raised at the Panel meeting:

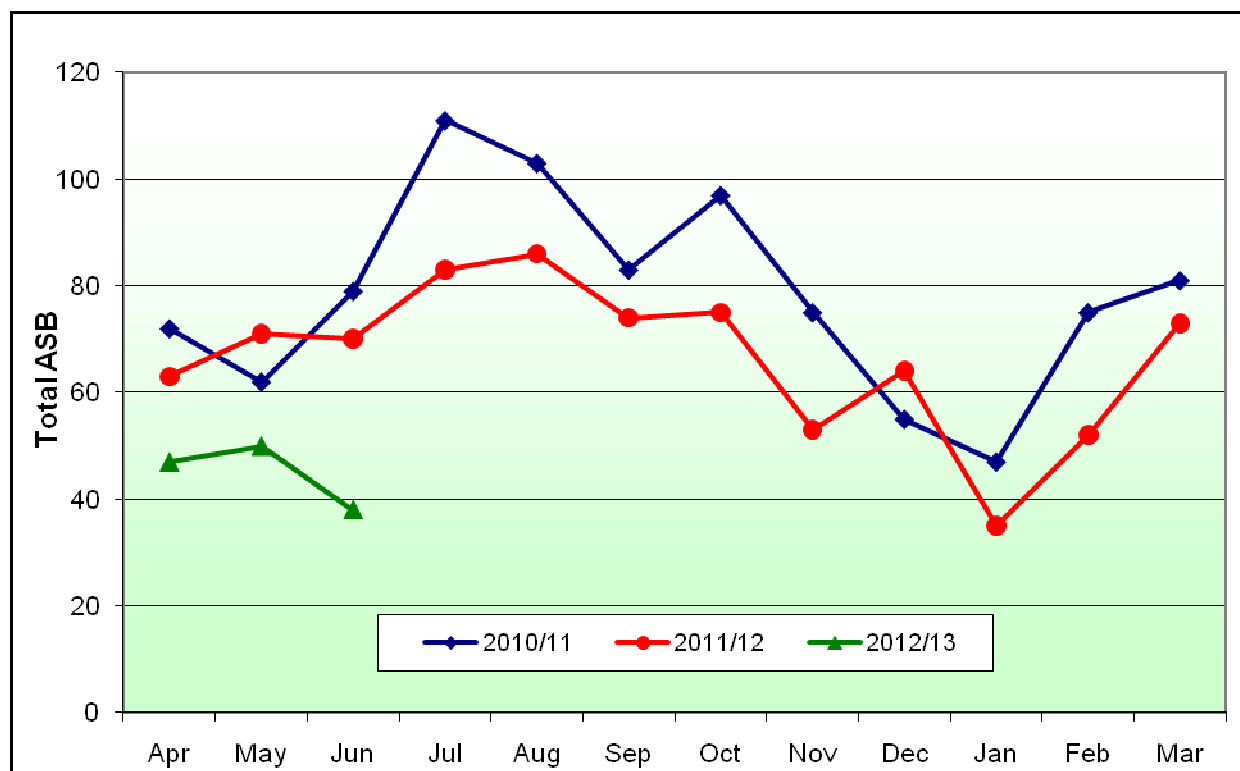
None Raised

Current Crime and Incident Levels

### Ely Neighbourhood Total Crime



## Ely Neighbourhood Total ASB



### Crime and Incident Levels in Ely Neighbourhood, by Ward

		Dwelling burglary	Other burglary	Violent Crime	Robbery	Theft of vehicle	Theft from vehicle	Cycle Theft	Theft from shop	Criminal Damage	Other crime	Total Crime	Total ASB
Ely Area	Apr 12 - Jun 12	4	20	45	2	7	7	6	34	41	100	266	135
	Jan 12 - Mar 12	15	32	50	1	4	25	5	47	37	98	314	160
	Apr 11 - Jun 11	8	29	56	2	8	16	18	48	42	80	307	204
Ely North	Apr 12 - Jun 12	0	3	10	0	5	1	1	0	14	20	54	39
	Jan 12 - Mar 12	4	11	14	0	2	12	0	0	14	18	75	30
	Apr 11 - Jun 11	3	11	12	1	1	1	2	0	8	13	52	49
Ely South	Apr 12 - Jun 12	0	7	2	0	0	0	1	3	5	9	27	15
	Jan 12 - Mar 12	2	1	7	0	0	2	0	6	5	17	40	23
	Apr 11 - Jun 11	1	1	4	0	0	1	1	7	4	15	34	22



Ely West	Apr 12 - Jun 12	2	0	7	0	0	4	2	0	9	22	<b>46</b>	<b>25</b>
	Jan 12 - Mar 12	3	6	6	0	1	4	3	0	5	9	<b>37</b>	<b>22</b>
	Apr 11 - Jun 11	1	6	10	0	2	8	3	0	11	12	<b>53</b>	<b>24</b>
Ely East	Apr 12 - Jun 12	2	10	26	2	2	2	2	31	13	49	<b>139</b>	<b>59</b>
	Jan 12 - Mar 12	6	14	23	1	1	7	2	41	13	54	<b>162</b>	<b>82</b>
	Apr 11 - Jun 11	3	11	30	1	5	6	12	41	19	40	<b>168</b>	<b>109</b>

## ***Fire Service data April 2012-May 2012***

### **Primary and Secondary fires**

#### **Ely Neighbourhood Panel Area**

Month	Ward	Is Primary Fire	Is Derelict	Is Chimney Fire	Property Category	Property Type	Is Property Regulated	Cause
April	Ely North	No	No	No	Not stated	Outdoor	Not stated	Accidental
May	Ely East	No	No	No	Not stated	Outdoor	Not stated	No known
April	Ely East	No	No	No	Not stated	Outdoor Structure	Not stated	Not stated
May	Ely East	No	No	No	Not stated	Outdoor Structure	Not stated	Accidental